

# **License for Origin 2024b**

---

Copyright © 2024 by OriginLab Corporation

All rights reserved. No part of the contents of this book may be reproduced or transmitted in any form or by any means without the written permission of OriginLab Corporation.

OriginLab, Origin, and LabTalk are either registered trademarks or trademarks of OriginLab Corporation. Other product and company names mentioned herein may be the trademarks of their respective owners.

OriginLab Corporation  
One Roundhouse Plaza  
Northampton, MA 01060  
USA  
(413) 586-2013  
(800) 969-7720  
Fax (413) 585-0126





# Table of Contents

1	License .....	1
2	License Activation .....	3
2.1	What is Product Key and how do I get it?.....	3
3	Single-User Node-Locked License.....	5
3.1	License Activation .....	5
3.2	License Deactivation .....	7
3.3	Update Your License after Maintenance Renewal.....	8
4	Multi-User Node-Locked License .....	11
4.1	Multi-User Node-Locked License .....	11
4.2	How to Request and Use Group Key for Large Multi-User Node-Locked License.....	18
5	Concurrent License .....	19
5.1	Concurrent License .....	19
5.2	FLEXnet Server Setup for Windows .....	19
5.3	FLEXnet Server Setup for Linux .....	25
5.4	FLEXnet Client Startup .....	28
5.5	Additional Information for Concurrent Licenses.....	29
6	Student License.....	43
6.1	Important Notes! .....	43
6.2	Get Product Key .....	43
6.3	License Activation .....	44
6.4	License Deactivation .....	44
6.5	Update Your Origin to a newer version .....	45
7	Trial License.....	47
7.1	To obtain a Trial license.....	47
7.2	See Also .....	47
8	Dongle License for V2019 or earlier.....	49
8.1	Get Started with Your Dongle .....	49
8.2	See Also .....	49
9	Dongle License .....	51
9.1	Activate Your Dongle.....	51
9.2	Update Your Dongle after Maintenance Renewal .....	52
10	Install or deploy Origin to the user's computers or a file server .....	53
10.1	Things to consider before getting started .....	53
10.2	Prepare your customized settings with the installer .....	53
10.3	Post Installation Updates by Group Folder .....	56

11	License for Version 2016 and Before .....	59
11.1	License for Version 2016 and Before.....	59
11.2	Single-User Node-Locked License for V2016 and Before.....	59
11.3	Multi-User Node-Locked License for V2016 and Before.....	65
11.4	Student License for V2016 and Before .....	75
12	Internet License .....	79
12.1	VERY IMPORTANT NOTES!!! .....	79
12.2	Register Serial Number and Get Product Key .....	79
12.3	License Activation .....	79
12.4	License Deactivation.....	79
12.5	Disconnect Origin from Internet.....	80

# 1 License

Check your **License Type** against your **Serial Number** and follow the relevant link to the **Help Topic** for installation information.

License Type	Serial Number	Help Topic
<b>Single-User Node-Locked</b>	xFxxx-9xxx-70/71/72xxxxx xFxxx-6xxx-70/71/72xxxxx	<a href="#">Single-User Node-Locked License</a>
<b>Multi-User Node-Locked</b>	xFxxx-9xxx-76xxxxx xFxxx-6xxx-76xxxxx	<a href="#">Multi-User Node-Locked License</a>
		<a href="#">Install or deploy Origin to the user's computers or a file server</a>
<b>Concurrent Network</b>	xxxxx-2xxx-79xxxxx xxxxx-3xxx-79xxxxx	<a href="#">FLEXnet Server Setup for Windows</a> <a href="#">FLEXnet Server Setup for Linux</a>
		<a href="#">FLEXnet Client Startup</a>
		<a href="#">Additional Information for Concurrent Licenses</a>
		<a href="#">Install or deploy Origin to the user's computers or a file server</a>
<b>Student</b>	xAxxx-xxxx-72xxxxx (1 year) xAxxx-xxxx-76xxxxx (6 month)	<a href="#">Student License</a>
<b>Trial</b>	N/A	<a href="#">Trial License</a>
<b>Dongle</b>	Shipped with Dongle	<a href="#">Dongle License</a>



These license instructions are for 2017 and later versions. If you have version Origin 2016 or older versions, please see instructions [here](#).

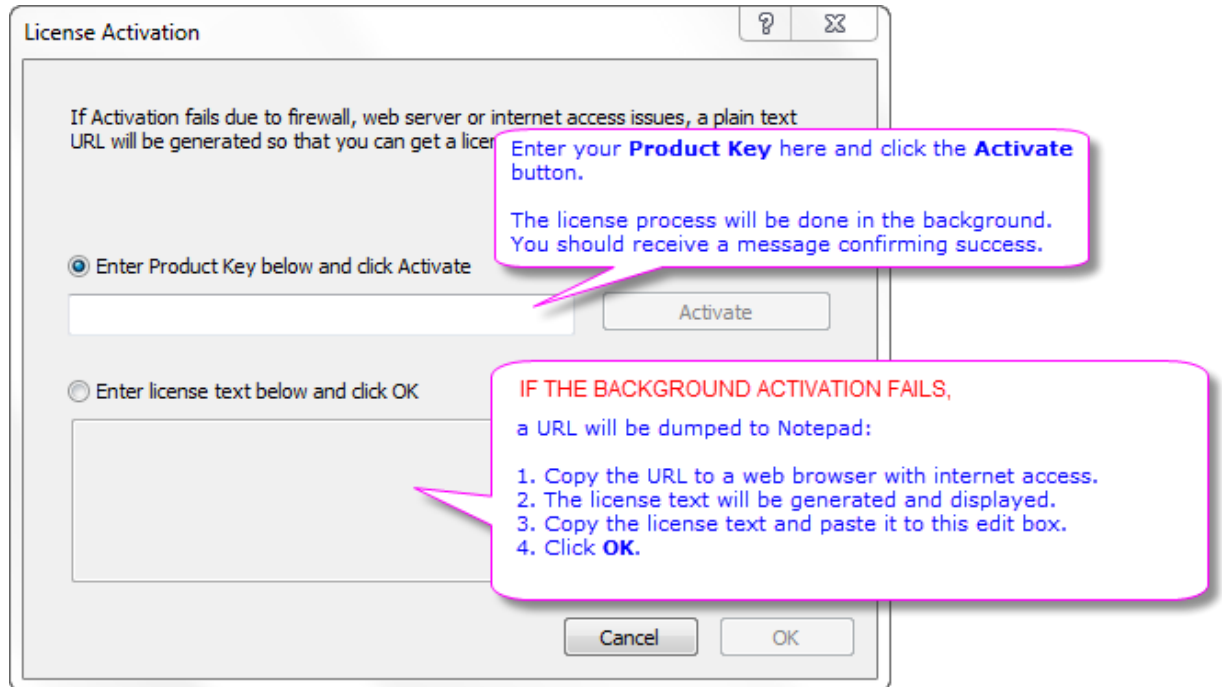




## 2 License Activation

In order to activate Origin, you need a **Product Key**.

This **License Activation** dialog will open every time you start Origin, until you enter a Product Key and complete the licensing process. The dialog can also be manually opened from the **Help: Activate License** menu item.



**NOTE:** The background license process will work in most cases. If it fails due to firewall, web server or other internet access issue, use the second edit box to enter the license text manually.

### 2.1 What is Product Key and how do I get it?

The Product Key is tied to your serial number. It will be sent to the OriginLab server to generate a license for your computer.

#### 2.1.1.1 How to get your Product Key:

If your Serial Number is	Then...
xFxxx-9xxx- <b>70</b> xxxxx xFxxx-9xxx- <b>71</b> xxxxx xFxxx-9xxx- <b>72</b> xxxxx or xFxxx-6xxx- <b>70</b> xxxxx xFxxx-6xxx- <b>71</b> xxxxx xFxxx-6xxx- <b>72</b> xxxxx	See <a href="#">this page</a> for step-by-step instruction to get your Product Key.

<p>xFxxx-9xxx- <b>76</b>xxxxx or xFxxx-6xxx- <b>76</b>xxxxx</p>	<p>Contact your Administrator for Product Key</p>
<p>xAxxx-6089- <b>72</b>xxxxx xAxxx-6089- <b>76</b>xxxxx</p>	<p>See <a href="#">this page</a> for step-by-step instruction to get your Product Key.</p>
<p>xMxxx-6xxx- <b>7</b>xxxxx</p>	<p>See <a href="#">this page</a> for step-by-step instruction to renew your dongle.</p>

### 3 Single-User Node-Locked License

You have a *Single-User Node-Locked* license if your serial number is:

x**F**xxx-**9**xxx-**70/71/72/73**xxxxx, or  
x**F**xxx-**6**xxx-**70/71/72/73**xxxxx.

If your serial number is:

xxxxx-**2**xxx-**79**xxxxx, or  
xxxxx-**3**xxx-**79**xxxxx,

then you have a *Concurrent Network* license and the information on this page is NOT relevant to you.

A *Single-User Node-Locked* package entitles you to install Origin on (1) computer. You will need to get a *Primary Product Key* for this computer from the OriginLab website, and the license is computer-specific. [Certain license packages](#) can get (1) *Home-use* Product Key for your notebook or home computer. This Home-use license runs in conjunction with your Maintenance plan and will remain active as long as you renew Maintenance.

If you want to replace the licensed Origin computer, you will need to deactivate the license before you can get a new one for the new computer.

**NOTE: This instruction is for Origin 2017 and later. If you have version 2016 or earlier, please refer to [this page](#).**

#### 3.1 License Activation



[Watch the video tutorial - Licensing Node Locked Origin](#)

##### 3.1.1 Important Notes!

- From Origin 2017, Origin has a new license system. You don't need administrator privileges to complete the node locked license process.

**If your Origin is older than 2017, please refer to [this page](#)**

- Once the licensing process is completed, the license is saved to the local computer and thus no further internet access is required.

##### 3.1.2 Get Product Key

**If you newly purchase the product,  
Or,  
upgrade your Origin (2016 or earlier version) to a newer version (2017 or higher) during  
Maintenance**

1. You will receive an email containing your Origin serial number and a registration link,  
*or*  
a printed License Certificate containing your Origin serial number and a registration code,  
*or*  
a Registration Code from your Origin distributors
  - If you receive the email,
2. Click the registration link to go to the OriginLab website. You will be asked to log in or join. Log in if you have an account or create an account as needed.

3. After logging in, your registration code and serial number information will be displayed on the web page. Click the **Register** button to register this serial number and generate your product keys.
  4. On the Origin Product Registration|License request history page that opens, (2) product keys are generated; (1) for your office computer and (1) for your Home-use computer.
- If you receive the printed License Certificate or Registration Code from distributors,
    2. Open OriginLab product registration page <https://www.originlab.com/reg> manually. Log in or create an account as needed.
    3. On the Register my product page, enter the registration code as requested and click **Continue** button to register this serial number and generate your product keys.
    4. On the Origin Product Registration|License request history page that opens, (2) product keys are generated; (1) for your office computer and (1) for your Home-use computer.



You can always check the product keys by clicking **Manage My License(s)** under your portal and selecting the serial number link. You can then check the product key information on the **Origin Product Registration|License request history** page that opens.

#### **If you upgrade your Origin (2017 or higher version) to a newer version during Maintenance**

Starting from Origin 2017 different versions share the same product key. So no need to find a new product key for the newer version. See [here](#)-> "If yes..." section for detail steps of upgrading.

#### **3.1.3 Activate Origin with Product Key**

1. Start Origin. A [License Activation dialog](#) opens.
2. With **Enter Product Key below and click Activate** selected, enter your product key and click **Activate**.
3. The license process will then be done in background. If successful, you will get a success message.

#### **If the background licensing process fails, please continue with the following steps:**

4. If the licensing process fails for some reason (for example, no internet connection), a Notepad window opens with a link in it. Proceed to the next step.  
If you do NOT see a Notepad window, this may indicate a firewall issue. In this case, the user should disconnect from the internet (via the operating system or by physically disconnecting the network cable from your computer). When no internet connection is detected, this will force the opening of the Notepad window and you can then proceed to the next step.
5. Copy this link to a web browser that has an internet connection. The link will bring you to the OriginLab website.
6. When you log into your account, the license text will be generated and displayed on the web page.
7. Copy the license text and paste it back to Origin's License Activation dialog. Click **OK**. If this step fails, please run the software as administrator (Right-click the Origin program icon and choose **Run as administrator**) and try again.

### 3.1.4 See Also

- [Activation for Multi-User Node-Locked](#)
- [Activation for Student License](#)

## 3.2 License Deactivation



[Watch the video tutorial - Deactivating a Node Locked License](#)

**If you have version 2016 or earlier, please refer to [this page](#).**

If licensing is successful, the product key will be marked as "Locked" in the portal and it cannot be used on another computer.

When you plan to transfer your licensed Origin software from one computer to another, you will need to deactivate the license from the original computer and then activate the license for the new computer using the same product key.

### 3.2.1 If Origin can still run on your computer

1. Start Origin. Select **Help: Deactivate License** to open the **License Deactivation** dialog.
2. Click the **Deactivate Now** button.
3. The license deactivation process will then be done in background. If successful, you will get a success message.

**If the background deactivating process fails, please continue with the following steps:**

4. If the background deactivating process fails for some reason (for example, no internet connection, originlab.com is blocked by the firewall, etc.), a Notepad window opens with a link in it.
5. Copy the link to a web browser that has an internet connection. The link will bring you to the OriginLab website displaying the license information.
6. Make note of the **Deactivation Code (DC)** .
7. Go back to Origin. Enter the **Deactivation Code** in the deactivation code edit box at the bottom of the **License Deactivation** dialog. Click the **Deactivate License** button.
8. A Notepad window opens with a link in it. Copy the link to a web browser that has internet an connection.
9. Click the **Continue** button on the website. When you see a success message, one license is released for re-use.

### 3.2.2 If your licensed Origin computer is no longer available

1. Go to the OriginLab website (www.originlab.com) and log in.
2. On the Welcome page, click the "Manage my License(s)" link.
3. On the Manage my License(s) page, click on the serial number that you are deactivating and then on the "Go" link in the **Deactivation** column.

4. On the **Deactivate Origin from a device** page, confirm the information and click **Continue** to deactivate. If the deactivation succeeds, you will get a success note and the product key can be re-used.
5. If the deactivation fails, the page automatically transfers you to the **System Transfer Request Form**. Fill out the form as requested and submit it.

### 3.2.3 See Also

- [Deactivation for Multi-User Node-Locked License](#)
- [Deactivation for Student License](#)

### 3.2.4 FAQ

- [After upgrading my Operating System, Origin asks me for a license](#)
- [Do I have to deactivate my old version license before getting started with my new version?](#)

## 3.3 Update Your License after Maintenance Renewal

Starting from Origin 2017, different versions share the same license, which means that the newer version will inherit all license information from the old version, including product key and its usage status. This makes the upgrade easier.

After your [Maintenance](#) renewal has been processed, complete the following steps to obtain an updated license.

1. Go to OriginLab website (www.OriginLab.com). Log in.
2. On the Welcome page, click the "Manage my License(s)" link.
3. In the Manage my License(s) page, check the **Version** column in the serial number table to see if there is newer version available to upgrade.

#### **If yes, follow the instruction below to upgrade to newer version**

- If you choose to install the new version on the computer on which the current Origin is licensed, please follow the steps to install and activate the new version.
  1. Download the new version from the OriginLab website. Install it.
  2. Start Origin. The license process will then be done in background automatically. If successful, you will get a success message. If failed, a Notepad window opens with instruction. Follow the instruction to activate Origin manually.
- If you want to install the new version on a new computer, please follow the steps to install and activate the new version.
- If you don't use up all product keys of the current version, you can install the new version on your new computer and use the available key to activate it. See the detailed activation instruction in [Activate Origin with Product Key section](#).
  - If you use up all product keys of the current version, you must deactivate at least one license that is not used any more before you can re-use the product key to activate

new version of Origin on the new computer. See the detailed deactivation instruction in [License Deactivation section](#).

**If there is no newer version, it means that you have already registered the latest version. You can follow the instruction below to obtain an updated license for your Origin.**

1. Start Origin. Select **Help: Activate License**.
2. In the **License Activation** dialog, the product key is pre-filled. Click the **Activate** button.
3. After the activation process is completed, select **Help: About Origin** to confirm the updated maintenance expiration date is correct.

**Note:**

You are always recommended to upgrade your Origin to the latest version during Maintenance.





## 4 Multi-User Node-Locked License

### 4.1 Multi-User Node-Locked License

You have a *Multi-User Node-Locked* license if your serial number is:

*xFxxx-9xxx-76xxxxx*, or  
*xFxxx-6xxx-76xxxxx*.

If your serial number is:

*xxxxx-2xxx-79xxxxx*, or  
*xxxxx-3xxx-79xxxxx*,

then you have a *Concurrent Network* license and the information on this page is NOT relevant to you.

A *Multi-User Node-Locked* package entitles you to install or deploy Origin on a number of computers, based on your purchased license number. Each of these computers needs to get a license from the OriginLab website, and the license is computer-specific. If you want to replace the licensed Origin computer, you will need to deactivate the license before you can get a new one for the new computer.

**NOTE: This instruction is for Origin 2017 and later. If you have version 2016 or earlier, please refer to [this page](#).**

#### 4.1.1 Administrator Tips: Before you deploy Origin to your users ...



[Watch the video tutorial - Getting Started with the Multi-user Node Locked Package](#)

For multi-user node locked packages, OriginLab provides a mechanism to control which OriginLab web membership accounts can obtain a license for Origin installed with your serial number. This mechanism is intended to prevent unauthorized use of your serial number, ensuring that all licenses purchased by your organization are available to authorized members of your organization.

##### 4.1.1.1 [How to Establish the Product Key Deployment Mechanism on the OriginLab Website](#)

As the Origin administrator, please complete the following steps to register your serial number, generate product keys and determine the method to deploy product keys to your users. Please complete this before notifying your users that the Origin software is available for their use.

1. After purchasing, you will receive an email containing your Origin serial number and a registration link. In some distributor areas, you will receive a Registration Code from your distributors.
2. Click the registration link to go to OriginLab website. You will be asked to log in or join. Log in if you have an account or create an account as needed.  
If you received the Registration Code, please open OriginLab product registration page <https://www.originlab.com/reg> manually to continue with step 3.
3. After logging in, your serial number, registration code, and 3 options to deploy the product keys will be displayed on the web page. Select one of the following options and **give careful consideration to your selection as you will not be able to switch options once you begin the licensing process:**
  - **I will obtain all license Product Keys myself**  
If you select this option, you will be responsible for licensing each Origin installation, either directly by going to each workstation, running Origin and entering the Product Key; or indirectly by distributing Product Keys to your users.  
This means that:

1. You will log into the OriginLab website using your account.
  2. Click the "Manage My License(s)" link.
  3. Locate the relevant serial number in the table, and click the link. All product keys will be listed there.
  4. Complete licensing by running Origin on the workstation and using an available Product Key to complete license activation.
- **I will approve user requests for license Product Keys**

If you select this option, you will be given a URL by which your users can request a product key. Before sending the URL to your users, you will need to add user email fragments. You will then:

    1. Email the URL to your users.
    2. When they make their request for a product key via the URL, you will receive an email.
    3. You will then go to "Handle Product Keys request" page and assign product key(s) to a table of selected users. This will generate an email to the user's account, containing a product key.
    4. The user will then install and run Origin and use the product key to complete license activation.
  - **Each user will obtain a license Product Key**

If you select this option, you will be given a URL to distribute to your users. Before sending the URL to your users, you will need to add user email fragments. You will then:

    1. Email the URL to your users.
    2. When the user clicks the URL, it will generate a product key that is emailed to the user.
    3. The user will then install and run Origin and use the product key to complete license activation.
4. Enter email fragments as needed.
    - If you chose **I will obtain all license Product Keys myself** in the previous step, you don't need to set up the email fragment.
    - If you chose **I will approve user requests for license Product Keys**,
      - If you want to allow individuals that you approve to obtain licenses for your serial number,  
Enter your full email address that is present in your log in account. After finishing this process, you can then add additional full email addresses for your "approved" users (see the following tip). You can return to the OriginLab website at any time to add these email addresses, as long as you add the user's email address before they try to obtain a license.

- If you want to restrict license access to any members of your organization, Enter an email address fragment that is unique to your organization and that will ensure that only eligible persons are able to obtain a license.
- If you chose **Each user will obtain a license Product Key**, you can enter your full email address and add additional full email addresses later, or enter an email address fragment that is unique to your organization. See detailed description above.



To enter additional email addresses or email fragments after successfully entering the first one,

4. Click your log in name located in the top right corner of the OriginLab website (or log in, if you are returning to the website and have not logged in).

5. Then on your "welcome" web page, click the **License Access Restrictions** link.

6. Follow the instructions on the page that opens, to add additional email addresses or fragments.

5. Click the **Register** button to complete registration.



- We provide a unique [Group Product Key](#) for the administrator of a large group to easily deploy keys to end users. This Group Key can also be batch installing Origin.
- You can tell the status of a product key from **HostID** column:
  - "Requested" means the end user has requested this product key and got this key under his/her account, but has not activated it yet. Other people cannot request it Unless you change it.
  - "Available" means no end user has requested this product key yet. Other people can still request it.
  - "*HostID*" means this product key has been requested and activated.

Product Key ^	User Email ^	Department ^	License Type ^	Highest version currently activated ^	HostID ^	Hostname ^	License Generate ^
<input type="checkbox"/>	3F william@originlab.com	QA	primary	9.85(2021b)	D60C-BF66-EF8F-D6B4	IJBTKVUV70	3/17/202
<input type="checkbox"/>	4F passino@originlab.com	QA	primary		requested		3/17/202
<input type="checkbox"/>	7F		primary		available		3/17/20



If you choose deploy method 2nd or 3rd, you can retrieve the product key request link by the following:

1. Go to OriginLab website ([www.OriginLab.com](http://www.OriginLab.com)). Log in.
2. On the Welcome page, click the "Manage my License(s)" link.
3. On the Manage my License(s) page, click the desired serial number link.
4. On the Origin Product Registration | License Administration page that opens, click on the "Email me the template for notification to my users" button (if you do not see the button on this page, please click "you can see and manage all product keys here" link).
5. An email template with the product key request link will be sent to you.

### Origin Product Registration | License Administration

The information is being provided to you because

- You are the administrator
- Your Maintenance Service is active

#### Product Information:

Serial Number is: SF [REDACTED] Highest version entitled to activate: 9.95 (2022b)  
Total Seats: 2  
Admin email: [REDACTED]  
Total Product Keys: 4 Including Home-use Product Keys: 4  
Available for request: 3  
Requested: 1  
Registered: 0  
Maintenance expiring date: 10/6/2023  
License Expiring date: 10/6/2023

Email this page to me for my records

Export Product Keys

Email me the template for notification to my users

Request Group Product Key

#### 4.1.1.2 Instructions to Provide your Origin Package to Users

When you distribute Origin to your users, in addition to providing them with the installer and the serial number, you must also provide the URL to request a product key, as the product key must be entered during license retrieval. Also, you must tell your users that they must log into the OriginLab website during license retrieval, or join the OriginLab website if they do not have an account. Let the users know that they should enter their organization contact information, including email address, when joining the OriginLab website.

If they already have an account but it does not contain their organization email address (e.g. they joined using a Gmail address), tell them they must first update their account with the organization information. They must update that information by logging into the website and clicking the "View/Update my Profile Details" link.

#### 4.1.1.3 [Multi-user Site Deployment](#)

### 4.1.2 License Activation

#### Important Notes!

- From Origin 2017, Origin has a new license system. You don't need administrator privileges to complete the node locked license process.
- Once the license process is completed, the license is saved to the local computer and thus no further internet access is required.

#### 4.1.2.1 License Activation Instructions for End-Users

1. Obtain your serial number and the associated product key from your Origin administrator.
2. Start Origin. A [License Activation dialog](#) opens.
3. With **Enter Product Key below and click Activate** selected, enter your product key, then click **Activate**.
4. The license process will then be done in background. If successful, you will get a success message.

#### **If the background licensing process fails, please continue the following steps:**

5. If the licensing process fails for some reason (for example, no internet connection, originlab.com is blocked by the firewall, etc.), a Notepad window opens with a link in it.
6. Copy this link to a web browser which has an internet connection. The link will bring you to the OriginLab website.
7. The license text will be generated and displayed on the web page.
8. Copy the license text and paste it back to Origin's **License Activation** dialog. Click **OK**.

#### 4.1.2.2 Administrator, obtaining license for user's computer

If you are the administrator for a multi-seat node-locked package, you can allow the users to obtain their own Origin licenses or you can handle the licensing process. If you choose **I will obtain all license Product Keys myself** when establishing the Product Keys deployment mechanism for a Serial Number, you should follow the instructions provided above to activate the license for each user's computer.

#### 4.1.2.3 See Also

- [Activation for Single-User Node-Locked](#)
- [Activation for Student License](#)

#### 4.1.2.4 FAQ

- [When I try to request a product key, I see a message telling me that I do not have access to the license. Why do I see this message and what can I do to solve it?](#)
- [Do I have to deactivate my old version license before getting started with my new version?](#)

### 4.1.3 License Deactivation

When you plan to transfer your licensed Origin software from one computer to another, you will need to deactivate the license from the original computer and then activate the license for the new computer using the same product key.

#### 4.1.3.1 If Origin can still run on your computer

1. Start Origin. Select **Help: Deactivate License** to open the **License Deactivation** dialog.
2. Click the **Deactivate Now** button.
3. The license deactivation process will then be done in background. If successful, you will get a success message.

**If the background deactivating process fails, please continue with the following steps:**

4. If the background deactivating process fails for some reason (for example, no internet connection, originlab.com is blocked by the firewall, etc.), a Notepad window opens with a link in it.
5. Copy the link to a web browser that has an internet connection.
6. The web page displays your license information. Make note of the **Deactivation Code (DC)**.
7. Go back to Origin. Enter the **Deactivation Code** in the deactivation code edit box at the bottom of the **License Deactivation** dialog. Click the **Deactivate License** button.
8. A Notepad window opens with a link in it. Copy the link to a web browser that has an internet connection.
9. Click the **Continue** button on the website. When you see a success message, one license is released for re-use.

4.1.3.2 If your licensed Origin computer is no longer available

**If you are the administrator of the package,**

Complete the following steps to deactivate the license on the OriginLab website.

1. Go to OriginLab website (www.OriginLab.com). Log in.
2. On the Welcome page, click the "Manage my License(s)" link.
3. On the Manage my License(s) page, click the desired serial number link.
4. On the page that opens, click on the "you can see all product keys here" link.
5. On Origin Product Registration | License request history page, click the "go" link.
6. On the Deactivate Origin from a device page, confirm the PC information and click **Continue**. If the deactivation succeeds, you will get a success note and the product key can be re-used.
7. If the deactivation fails, the page automatically transfers you to the **System Transfer Request Form**. Fill out the form as requested and submit it.

**If you are the user of the package,**

Contact your administrator to request deactivating the license on the OriginLab website.

4.1.3.3 FAQ

- [After upgrading my Operating System, Origin asks me for a license](#)
- [Do I have to deactivate my old version license before getting started with my new version?](#)

**4.1.4 Update your Multi-User Node-Locked License after Maintenance Renewal**

From Origin2018, different versions share the same licenses, which means that the newer version will inherit all license from the old version, along with their product keys and usage status. It makes the upgrade easier.

**If you are the administrator of the package,**

After your [Maintenance](#) renewal has been processed, your serial number will be upgraded to the latest version automatically. All license related settings of the previous version (including the mechanism to deploy the product keys and the email fragments) will be applied to the latest version. You can inform your users when you are ready. The following are some tips.

1. Go to OriginLab website (www.OriginLab.com). Log in.
2. On the Welcome page, click the "Manage my License(s)" link.
3. On the Manage my License(s) page, check the **Version** column in the serial number table to see if there is newer version available to upgrade.
  - **If yes**, inform your users to install and activate the new version with the same product key. Refer to **If you are the user of the package > If there is new version available for upgrade** section below for detailed steps.
  - **If no newer version**, you can inform your users to use the same product key to obtain a new license for the current Origin with an updated Maintenance date. Refer to **If you are the user of the package > If there is no new version** section below for detailed steps.
  - **If you want to reset a group of product keys**, refer to [this section](#).

#### **If you are the user of the package,**

1. Receive the renewal information from your administrator.
2. If there is new version available for upgrade,
  1. Install the new version on the computer on which current Origin is activated.
  2. Start Origin. The license process will then be done in background automatically. If successful, you will get a success message. If failed, a Notepad window opens with instruction. Follow the instruction to activate Origin manually.

If there is no new version,

3. Start Origin. Select **Help: Activate License**.
4. In the **License Activation** dialog, the product key is pre-filled. Click the **Activate** button. If successful, you will get a success message. If failed, a Notepad window opens with instruction. Follow the instruction to activate Origin manually.
3. After the activation process is completed, select **Help:About Origin** to confirm the updated maintenance expiration date is correct.

#### **4.1.5 Administrator Tips: If you want to reset a group of Product Keys**

**Note:** The following web tool is for active Maintenance only.

1. Go to the OriginLab website (www.OriginLab.com). Log in.
2. On the Welcome page, click the "Manage my License(s)" link.
3. On the Manage my License(s) page, click the desired Serial Number link.
4. On the page that opens, click on the "you can see all product keys here" link.
5. On Origin Product Registration | License request history page, tick the checkbox for the Product Keys that are unused (Hostname field is empty).

6. Click the **Request OriginLab to reset the selected Product Keys** button.
7. Describe your reason for reset in the Comments edit box. Click **OK**.
8. If your request has been processed, you will receive an email to inform you that the product keys have been reset. You can then see the new keys on the License Administration page.



If you have a large group of keys to reset, please contact [License Support](#) with the reason and attach a list of Product Keys to reset.

#### 4.1.6 [Install or deploy Origin to the user's computers or a file server](#)

## 4.2 How to Request and Use Group Key for Large Multi-User Node-Locked License

For the administrator of a large group, a campus-wide site license for example, we provide a unique Group Product Key that should make deploying Origin to a large number of computers easier.

To generate the Group Product Key:

1. Log into the OriginLab website.
2. Click the "Manage my Licenses" link, then click the desired Serial Number.
3. Click the "you can see all product keys here" link. You will find the **Request Group Product Key** button on the page that opens.

The purpose of the Group Product Key is to free you from having to manually enter the key during activation.

To make use of the Group Product Key:

1. Save the Group Product Key in a text file and name it **PK.txt**.
2. Put the file **PK.txt** into the folder where other Origin Setup files are.
3. Run the Origin setup files to install.
4. After installation is complete, start Origin. Note that the Group Product Key is pre-filled in [the License Activation dialog](#) and the license is automatically activated.

The Group Product Key in combination with the [Silent Install Method](#) allows you to install and license Origin automatically on every user machine.



## 5 Concurrent License

### 5.1 Concurrent License

You have a *Concurrent Network* license if your serial number is:

xxxxx-**2**xxx-**79**xxxxx, or  
xxxxx-**3**xxx-**79**xxxxx.

If your serial number is:

xxxxx-**9**xxx-xxxxxxxx, or  
xxxxx-**6**xxx-xxxxxxxx,

then you have a *Node-Locked* license and the information on this page is NOT relevant to you.

A *Concurrent Network* package entitles you to install or deploy Origin on any number of computers in your organization. Each of these computers must have a connection to a computer (workstation or server) on which you must install a FLEXnet server (provided by OriginLab) and set up a FLEXnet service for license management. If you are already using FLEXnet license management for another software vendor, then you can use this same computer to set up a service for managing your Origin, as long as the operating system is supported by OriginLab.


The FLEXnet service will restrict the number of Origins that can run at the same time, based on your purchased concurrent number. Thus, if you purchased a 25-user Concurrent Network package, no more than 25 computers can run Origin at the same time. Once an Origin is running, there is an option to "borrow" the Origin, such that it can be run for a specified maximum time detached from the FLEXnet server.

The Concurrent Network license is subject to time zone restrictions. This will require all client machines on which Origin is running must be in the same time zone as that of the server machine. If you want to run Origin in different time zone from the server (the oversea office for example), please contact OriginLab.

#### **Topics covered in this section:**

- [FLEXnet Server Setup for Windows](#)
- [FLEXnet Server Setup for Linux](#)
- [FLEXnet Client Startup](#)
- [Additional License Management Information](#)

### 5.2 FLEXnet Server Setup for Windows

This page is mainly for users who are new to FLEXnet Server and set it up for the first time. The easiest way to learn it is by watching  [Setting up your Concurrent Network Package](#) .

- If you are just upgrading your previous concurrent Origin to a newer version, [you can update your license server and obtain a new license file for the service](#).
- If you are already using FLEXlm or FLEXnet to manage other software, [you can use that existing FLEXlm or FLEXnet server to manage your Origin/OriginPro Concurrent Network package](#).

#### 5.2.1.1 [Select a Computer for your FLEXnet Server](#)

#### **Requirements**

- Stable machine that doesn't require frequent reboot. It can be either a server or workstation.
- Operation system supports Windows Server 2022, 2019, 2016, 2012, 2008, Windows 11, 10, 8/8.1, 7 and Vista (both 32 & 64-bit).
- Low network traffic
- Minimum recommended system RAM is 64 MB.
- All potential Origin computers can connect to it. Communication between the FLEXnet license server and the Origin concurrent network members is by TCP/IP networking protocols.

#### 5.2.1.2 Install FLEXnet server



We always recommend updating your FLEXnet servers to the latest version to avoid any licensing issue or security risk. The current version is 11.19.4.1.

#### 5.2.1.2.1 On a New Machine

If you are installing a FlexNet Server on a new machine, then simply download the FLEXlmServerSetup.exe and install it. Or if you have Origin DVD, you can also install from there. Please DO NOT install it to C:\Program Files\ or to your Desktop.

- [FLEXlmServerSetup32Bit.exe](#)
- [FLEXlmServerSetup64Bit.exe](#)

#### 5.2.1.2.2 Updating Existing FlexLM License Server

To upgrade your FLEXnet server to the latest version (11.19.4.1), we recommend uninstall your old FLEXnet Server installation and then install the new version. And it should not be under Program Files folder or Desktop.

##### **To Remove your old OriginLab FLEXnet Server:**

1. Go to your old FLEXnet server folder, find your license file, and make a backup since you will need it when you start the new server.
2. Run LMTOOLS.exe and go to the Start/Stop/Reread tab. Check Force Server Shutdown checkbox and click Stop Server.
3. Wait a moment for the server to shut down. You can check Server Status to see if it is shut down.
4. Next, go to the Config Services tab, select your OriginLab license Service Name, and click Remove Service. You may close LMTOOLS.exe now.
5. Now uninstall the Originlab FLEXlm server by going to the Windows Control Panel, then find the program named 'License Server for OriginLab' and run it. It will uninstall the old OriginLab FLEXnet server files.
6. Clean up the old folder if it still exists. It may contain your license file or log files, for instance.

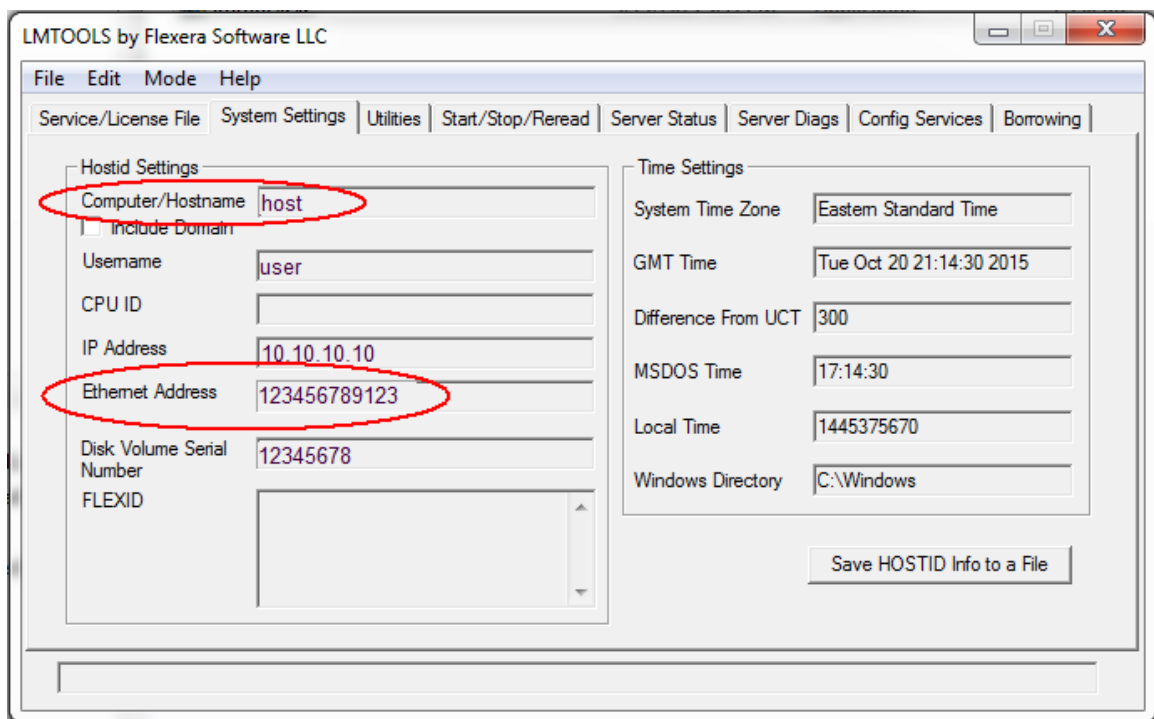
##### **Notes:**

- If your existing FLEXnet Server isn't in the Program Files folder or on the Desktop and you don't want to do a fresh install, you can replace the **lmgrd.exe**, **orglab.exe** and **lmtools.exe** with those in the zip files below.  
[FLEXnetServer11.19 Files 32Bit.zip](#)  
[FLEXnetServer11.19 Files 64Bit.zip](#)
- The 32-bit FLEXIm License Server should work for 64-bit Windows.
- [If you already have a FLEXnet server installed to manage other software, you can use the same FLEXnet server to manage Origin](#)
- Additional FLEXnet platforms that OriginLab does not currently support can be found on Flexera Software's requirements page. Contact OriginLab Technical Support to request adding support for a platform:

5.2.1.3 Obtain a license file from Originlab.com for FLEXnet Server computer

**5.2.1.3.1 Find the FLEXnet server Host Name and Host ID**

1. If you have installed FLEXNet Server, go to the installed location. Under Tools folder, run LMTools.exe.
2. Make note of the **Computer/Hostname** and **Ethernet Address** on the System Settings tab.



3. Or open the Command Prompt and enter the command:

```
ipconfig /all
```

In the Command Prompt window, these two quantities will be reported as the **Host Name** and the **Physical Address**.

```
Microsoft Windows XP [Version 5.1.2600]
(C) Copyright 1985-2001 Microsoft Corp.

C:\Documents and Settings\user>ipconfig/all

Windows IP Configuration

Host Name . . . . . : host
Primary Dns Suffix . . . . . : networkname.com
Node Type . . . . . : Hybrid
IP Routing Enabled. . . . . : No
WINS Proxy Enabled. . . . . : No
DNS Suffix Search List. . . . . : networkname.com
                                networkname.com

Ethernet adapter Local Area Connection:

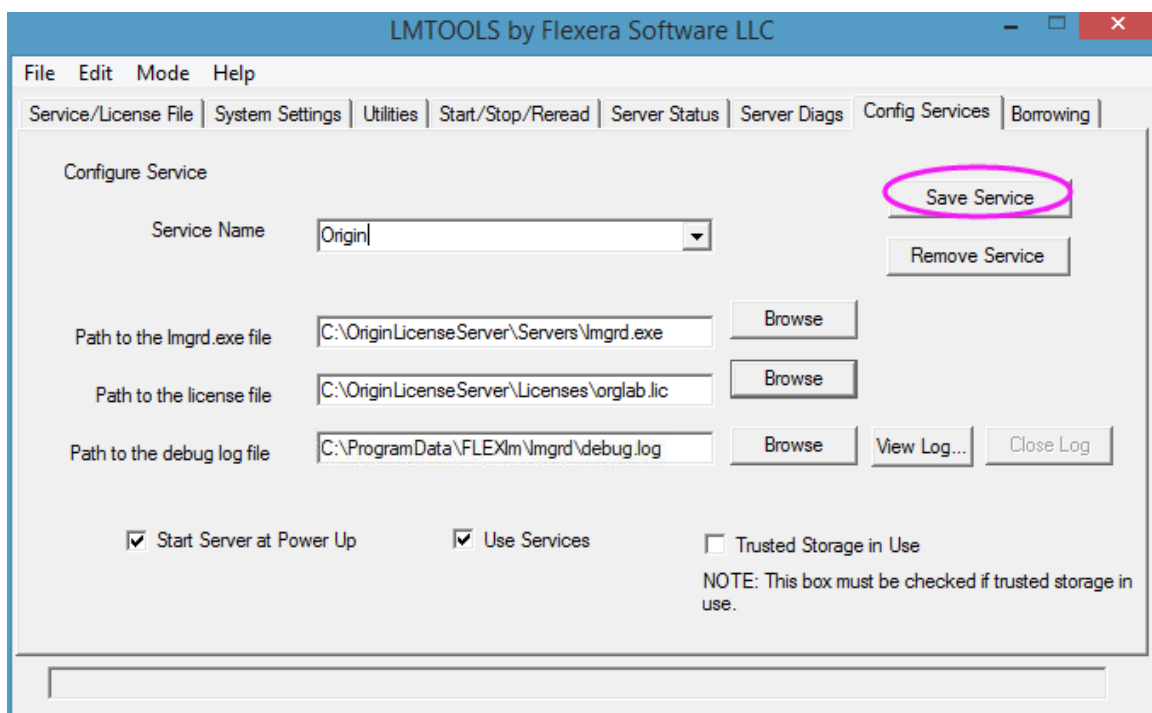
Connection-specific DNS Suffix . . : networkname.com
Description . . . . . : Intel(R) PRO/100 VE Network Connecti
on
Physical Address. . . . . : 11-11-11-11-11-11
Dhcp Enabled. . . . . : Yes
Autoconfiguration Enabled . . . . : Yes
IP Address. . . . . : 00.00.00.00
Subnet Mask . . . . . : 111.111.111.11
```

### 5.2.1.3.2 Obtain the license file

1. Go to [Originlab.com](http://Originlab.com) and log in.
2. Choose the **Manage My License(s)** link on the page that shows after login.
3. If your web membership account already has an Origin serial number(s) associated with it, you will see your "Origin Product Registration" page.
  - o If this is the first time you are registering and obtaining a license for this serial number and version, click the **Register New Serial Number** button.
  - o If you previously registered and obtained a license for this serial number and version (such as if you are moving your FLEXnet service to a different machine, and you completed the system transfer request), then select the check box next to your serial number and version and click the **Get FLEXnet License** button located below the table.
4. Select the "I want to register my Origin software and obtain a license file for a computer" radio button and click **Next**.
5. Enter your Origin **serial number**, **version**, etc. and click **Continue**.
6. Then enter the FLEXnet server **Host Name** (Command Prompt's **Computer/Hostname**) and **Host ID** (this is the **Ethernet Address** reported by LMTTOOLS; or the **Physical Address** reported by Command Prompt, WITHOUT THE DASHES ("-")).
7. Click the **Submit** button to generate the license file.
8. When successful, you will see the license file text on the web page. Copy the license file text from the web page and paste it into a text editor such as Notepad.
9. In the text editor, select the File|Save As option. Set **All Files (\*.\*)** as **Save as type**. Save it as orglab.lic under the FLEXnet server's \Licenses\ folder. This is recommended location. But you can also save it somewhere else. Go to the Licenses\ folder to make sure the file is orglab.lic instead of orglab.lic.txt.

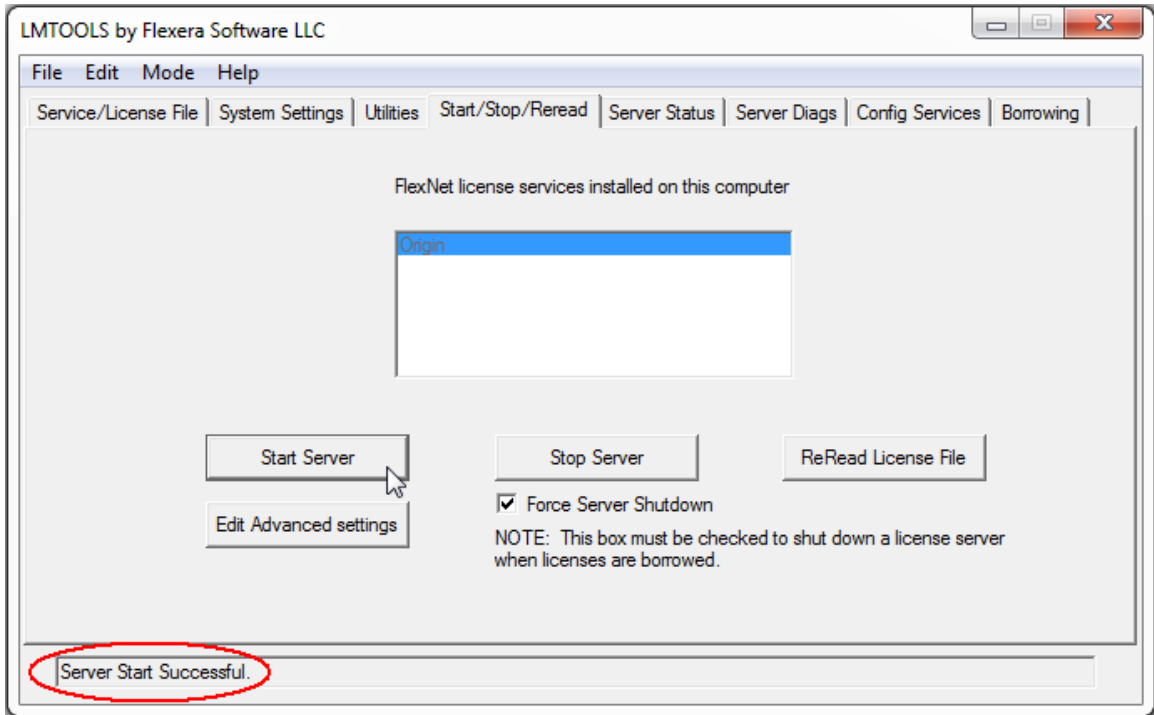
5.2.1.4 Set up and start the FLEXnet service

1. Run **LMTOOLS.exe** from the FLEXnet server's `\Tools\` folder. If on Windows Server 2012, 2008, Windows Vista, 7 or 8 RIGHT-click on the LMTools.exe and select "Run as Administrator" to open it.
2. On the **Service/License File** tab, select **Configuration Using Services**.
3. On the **Config Services** tab, type OriginLab or name of your choice in the **Service Name** text box.
4. In the **Path to the lmgrd.exe file** field, click the Browse button and go to the FLEXnet Server `\Servers\` folder, select the **lmgrd.exe** file .
5. In the **Path to the license file** field, click the Browse button and go to the FLEXnet Server `\Licenses\` folder, select the **orglab.lic** file and click the **Open** button.
6. The debug log file does not yet exist - the service will create it based on what you enter in this text box. A path under `\ProgramData\FLEXlm\lmgrd\` is pre-filled in the text box. We recommend accepting this path to avoid any privilege issue.
7. Check **Use Services** checkbox.
8. If you want the service to start automatically when the server boots, select **Start Server at Power Up**.
9. Click **Save Service**.

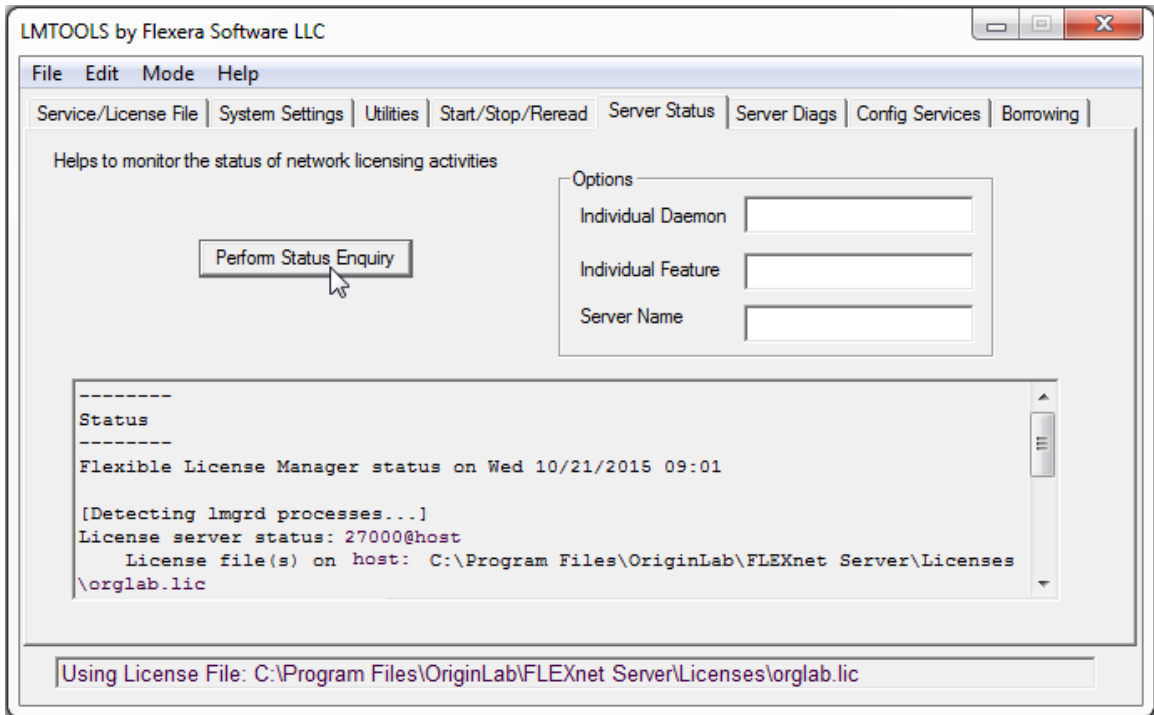


10. On the Start/Stop/Reread tab, select the **Force Server Shutdown** check box.

11. Click the **Start Server** button. You should get "Server Start Successful" message in the LMTOOLS status bar.



12. On the Server Status tab, click the Perform Status Enquiry button. The Status window reports relevant feature usage information.



13. You can open ports in your firewall for this FLEXnet license server to communicate to your Origin software. See detailed instructions [here](#).

**See Also:**

1. [Allowing access for the Origin FLEXnet service through a firewall between your server and client installations.](#)
2. If you want to restrict access to the FLEXnet service, or reserve licenses for specified users, departments, etc., you can [create an options file](#).
3. [Setup FLEXnet server for Linux](#)

5.2.1.5 [Install or deploy Origin to the user's computers or a file server](#)**5.3 FLEXnet Server Setup for Linux**

You have a *Concurrent Network* license if your serial number is:

xxxxx-**2**xxx-**79**xxxxx, or  
xxxxx-**3**xxx-**79**xxxxx.

If your serial number is:

xxxxx-**9**xxx-xxxxxxx, or  
xxxxx-**6**xxx-xxxxxxx,

then you have a *Node-Locked* license and the information on this page is NOT relevant to you.

A *Concurrent Network* package entitles you to install or deploy Origin on any number of computers in your organization. Each of these computers must have a connection to a computer (workstation or server) on which you must install a FLEXnet server (provided by OriginLab) and set up a FLEXnet service for license management. If you are already using FLEXnet license management for another software vendor, then you can use this same computer to set up a service for managing your Origin, as long as the operating system is supported by OriginLab.

The FLEXnet service will restrict the number of Origins that can run at the same time, based on your purchased concurrent number. Thus, if you purchased a 25-user Concurrent Network package, no more than 25 computers can run Origin at the same time. Once an Origin is running, there is an option to "borrow" the Origin, such that it can be run for a specified maximum time detached from the FLEXnet server.

**5.3.1 To set up a new FLEXnet server on Linux:**5.3.1.1 [Select a stable computer to be your FLEXnet server](#)

Choose a computer that is:

- Stable (does not require frequent reboots) and that has low network traffic.
- All potential Origin computers must have a connection to this computer. Communication between the FLEXnet license server and the Origin concurrent network members is by TCP/IP networking protocols.
- Minimum recommended system RAM is 64 MB.

OriginLab provides a FLEXnet license server (and vendor daemon only, if you already have a FLEXnet server) for the following operating systems:

- Red Hat Enterprise Linux

OriginLab has tested it on AlmaLinux 9 as well as on Debian 12.

The FLEXnet license server OriginLab provides is a 32-bit application, and it can be installed on both 32-bit and 64-bit Linux operating systems.



To run on 64 bit Linux, you may need to install additional libraries to allow running 32-bit applications.

- Red Hat Enterprise Linux:

```
sudo dnf install glibc.i686
```

- Debian/Ubuntu:

```
sudo dpkg --add-architecture i386
sudo apt update
sudo apt install libgcc-s1:i386
```

### 5.3.1.2 Download the FLEXnet server

#### **FLEXnet servers (includes the OriginLab vendor daemon)**

The Linux FLEXnet server is version 11.19.5.0.

- [Linux FLEXnet Server ver 11.19.5.0.zip](#)

#### **OriginLab vendor daemon only**

If you already have a FLEXnet server such as from a different software vendor, you can use that FLEXnet server to set up a service to manage your Origin. In this case you only need the OriginLab vendor daemon and license to set up your Origin service. However in this case of using a different software's FLEXnet server, you must consider the version compatibility requirements for FLEXnet components, as documented in the FLEXnet end user and administrator guides.

The Linux vendor daemon is version 11.19.5.0.

- [orglab](#)

### 5.3.1.3 Install the FLEXnet server for your selected computer

Unpack Linux\_FLEXnet\_Server\_ver\_11.19.5.0.zip using the following command:

```
unzip Linux_FLEXnet_Server_ver_11.19.5.0.zip
```

### 5.3.1.4 Obtain a license file for this computer, from the OriginLab website

1. Have your Concurrent Network serial number and version available
2. Find the FLEXnet server Host Name and Host ID

- 1.

```
./lmutil lmhostid -hostname
```

2. returns the Host Name for the system.

For example, the Host Name is **my-computer** if you get the following output:

```
./lmutil lmhostid -hostname
lmhostid - Copyright (c) 1989-2015 Flexera Software LLC. All
Rights Reserved.
The FlexNet Host ID of this machine is "HOSTNAME= my-computer"
```



4.

```
./lmutil lmhostid
```

5. returns the host ID for the system. For example, the host ID is **000c294dc666** if you get the following output:

```
./lmutil lmhostid
lmhostid - Copyright (c) 1989-2015 Flexera Software LLC. All
Rights Reserved.
The FlexNet Host ID of this machine is ""000c294dc666
000c294dc667""
```

### 3. Obtain the license file

1. Go to [www.originlab.com](http://www.originlab.com). Click the "License/Register Origin" link under the Support menu.
2. Log in if you already have a web membership account or create an account as needed.
3. After logging in, if your web membership account already has an Origin serial number(s) associated with it, you will see your "Origin Product Registration" page.
  - If this is the first time you are registering and obtaining a license for this serial number and version, click the **Register New Serial Number** button.
  - If you previously registered and obtained a license for this serial number and version (such as if you are moving your FLEXnet service to a different machine, and you completed the system transfer request), then select the check box next to your serial number and version and click the **Get FLEXnet License** button located below the table.
4. Select the "I want to register my Origin software and obtain a license file for a computer" radio button and click **Next**.
5. Enter your Origin serial number, version, etc. and click **Continue**.
6. Enter the FLEXnet server Host Name and Host ID and click the **Submit** button to generate the license file.
7. When successful, you will see the license file text on the web page. Copy the license file text from the web page and paste it into a text editor such as notepad.
8. Save the license file text as **.lic** file, such as *orglab.lic*. Typically, the license file is saved to the FLEXnet server's \Licenses\ folder, but you can save to a different location if you prefer.

#### 5.3.1.5 Set up and start the FLEXnet service

```
./lmgrd -c <path>orglab.lic -l [+]<path>orglabDebug.log
```

where *orglab.lic* is the license file you obtained from the OriginLab website.

For example, if your license file is located at */home/originlab/orglab.lic*, then you would enter the following command to start the service, and to keep the previous contents of the debug log file and to append new debug information to the bottom of the log file:

```
./lmgrd -c /home/originlab/orglab.lic -l +/home/originlab/orglabdebug.log
```

Alternatively, you would use the following command to start the service, and to clear the previous contents of the debug log file. (The debug log file gets cleared when the command is issued.):

License for Origin 2024b

```
./lmgrd -c /home/originlab/orglab.lic -l /home/originlab/orglabdebug.log
```

Use the **lmutil lmstat** utility to confirm that the license server is working:

```
./lmutil lmstat -a -c <path>orglab.lic
```

#### 5.3.1.6 Install or deploy Origin to the user's computers or a file server

The following documentation provides Origin deployment tips for both the Concurrent Network and the Multi-seat Node Locked packages.

- [Direct Installation](#)
- [MSI Installation](#)
- [Silent Install](#)
- [Building an Installation Package](#)
- [Installing Origin on a Remote Access Server such as Windows Terminal Server or Citrix](#)
- [Deploying Service Releases](#)
- [Sharing Custom Origin Files Including Service Releases](#)

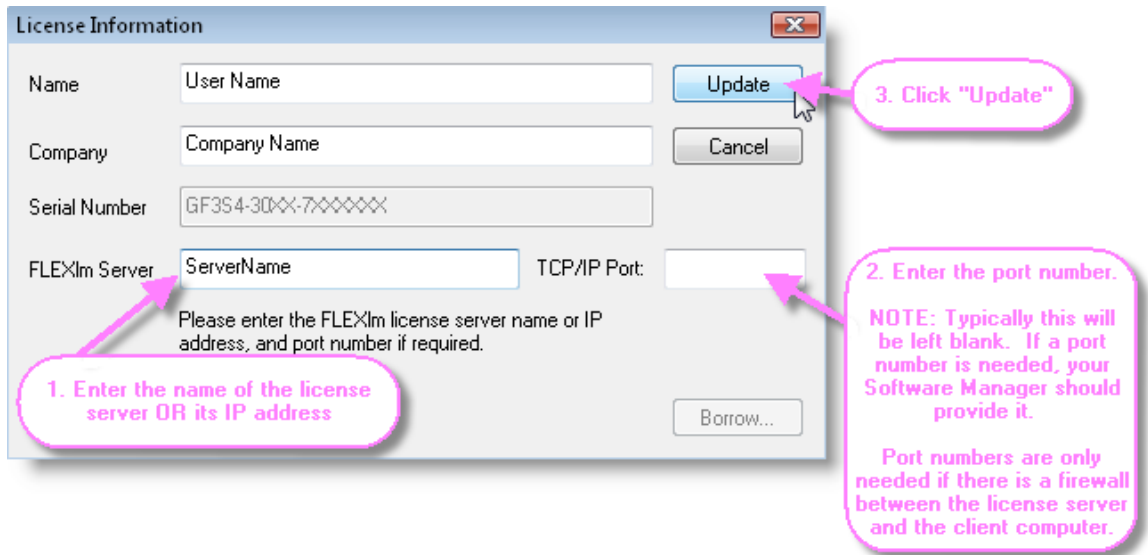
#### 5.3.2 **See Also:**

- If you are upgrading your Origin concurrent network package, [you can update your license server and obtain a new license file for the service](#).
- For allowing access for the Origin FLEXnet service through a firewall between your server and your client installations, see details in [Allowing Access through a Firewall](#).
- If you are already using FLEXlm or FLEXnet to manage other software, [you can use that existing FLEXlm or FLEXnet server to manage your Origin/OriginPro Concurrent Network package](#).
- [FLEXnet Server Setup for Windows](#)

## 5.4 FLEXnet Client Startup

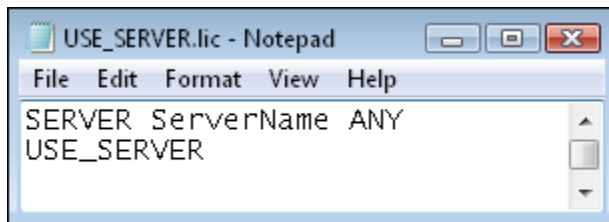
### 5.4.1 Entering the FLEXnet server information at first Origin start-up

When you first start Origin, you will see a License Information dialog box asking you to enter the Host Name or IP address of the FLEXnet server. This dialog can also be accessed by going to **Help: Activate License**. The Port Number text box should be left blank, except for when there is a firewall between the FLEXnet server and the Origin computers .



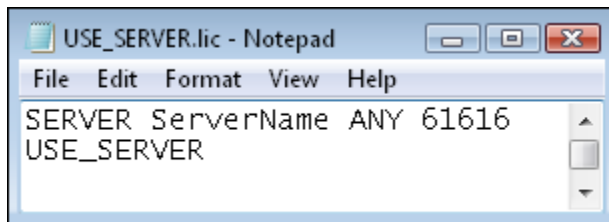
After entering the FLEXnet server details and clicking Update, you should see a "success" message. When successful, Origin creates a USE\_SERVER.lic file which it then reads at future Origin start-ups. If you need to find the save location for this license file, select **Preference: Options** and select the System Path tab.

This file will contain:



Where ServerName is the Host Name or IP Address you entered in the License Information dialog box.

And if you also entered the port number due to a firewall, then the USE\_SERVER.lic file will contain:



Where ServerName is the Host Name or IP Address, and 61616 is the port number in the SERVER line of the FLEXnet server license file and the port number that you entered in the License Information dialog box.

5.4.1.1 FAQ:

- [When I start Origin on a client machine and enter the correct FLEXlm server HostName, the information is not accepted and the License Information dialog box re-opens. How do I fix this problem?](#)
- [I see a message "License file missing or incorrect" when I run Origin. What is wrong?](#)

**5.5 Additional Information for Concurrent Licenses**

### 5.5.1 Additional License Management Information

In addition to the basic steps to setup your Concurrent Network package, you may want to review these additional topics:

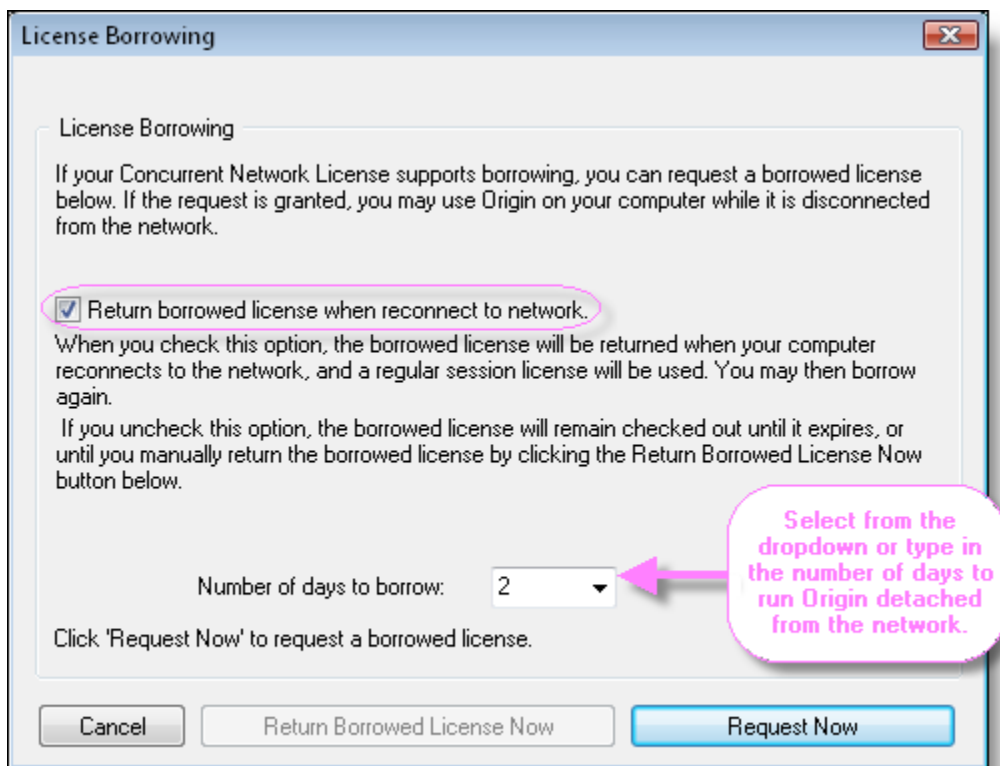
For further information on FLEXnet license management, please review the FLEXnet documentation installed in the FLEXnet server's *(Help)* folder.

#### 5.5.1.1 Running Origin when detached from the network

Your FLEXnet Concurrent Network management supports borrowing. This means that Origin computers can be detached from the FLEXnet server and still run Origin for a limited time. By default, the maximum allowed borrow time is one week. This maximum time is encoded in the FLEXnet server license file you obtain from the OriginLab website. If you require a shorter or longer maximum borrow time (up to one month), please [contact OriginLab](#).

##### 5.5.1.1.1 To Borrow a License on the User Computer

1. Open Origin. Select **Help; About Origin**.
2. Click on **License** button.
3. Click **Borrow** button.
4. Select from the dropdown the Number of days that you would like to borrow the license.



**NOTE:** The maximum number of days in the dropdown is one day less than the maximum in the license file. The numbers shown can be manually overwritten if the number of days you requested is a number in between the number of days shown.

For example, to request a borrow time of 100 days, type *100* in the **Number of day to borrow** combo box.

5. Click **Request Now**.
6. You should see a message stating that your license has been checked out successfully.
7. Disconnect the user computer from the network BEFORE a restart of Origin if you left the **Return borrowed license when reconnect to network** checked.

**NOTE:**

If you restart Origin while still connected to the network your license will automatically be checked back in unless you UN-checked the **Return borrowed license when reconnect to network** checkbox to borrow the license.

**5.5.1.1.2A Note on Roaming User Profiles:**

Roaming profiles are not supported by the FLEXnet license borrowing feature. However, borrowing can be made to work with roaming profiles if you use the following procedure:

**To borrow a license:**

1. Log in to the computer using your roaming profile (computer is connected to network.).
2. Start your Origin and borrow a license.
3. Close Origin.
4. Disconnect from the network, then shut down the computer. (By disconnecting before shutting down, you keep the profile local instead of storing it on the roaming-profile-server.)

**To check in a borrowed license:**

1. Start the computer and log in using your roaming profile (WITHOUT connecting to the network).
2. Reconnect the computer to the network.
3. Start your Origin. It will automatically return the borrowed license.

**5.5.1.1.3 Changing the Borrow Time**

1. [Contact OriginLab Licensing support](#). Notify us that you need a new license file with a longer borrow time. Specify this new maximum borrow time, and include your Origin serial number.
2. OriginLab will then email you to let you know when you can obtain a new license file that includes the requested maximum borrow time.
3. Stop your FLEXnet service.
4. Back up your current FLEXnet license file.
5. Then save the new license file so that you over-write the old license file.
6. Restart the FLEXnet service.

**5.5.1.2 Using an Existing FLEXnet Server to Manage Origin**

If the computer that you plan to set up an Origin FLEXnet service on is already managing other software products with FLEXnet, then you can use this existing computer for your Origin license management. The simplest way to proceed is to set up your Origin FLEXnet service so that it uses the same Imgrd as your other software service. Also, you can use the Imtools that was installed for your other software service, to set up your service for Origin.

### 5.5.1.2.1 To set up your Origin server using an existing FLEX server

#### [Watch the video tutorial - Using an Existing FLEXnet Server to Setup your Origin Service](#)

1. Save the OriginLab vendor daemon to the folder where your Imgrd is currently saved. The OriginLab vendor daemon is available on the Origin DVD (for Windows OS, browse to the `\Concurrent FLEXnet Servers\Windows\OriginLab Vendor Daemon Only\` folder), or can be downloaded from the OriginLab website.
2. Obtain your Origin FLEXnet server license from the OriginLab website and save the license to the existing FLEXnet server `\Licenses\` folder.
3. Use the existing Imtools to set up and start your Origin service.

For more information on setting up multiple FLEXnet services on the same computer, please review the FLEXnet License Administration Guide [available for download](#) from the OriginLab website.

#### 5.5.1.2.2 See Also:

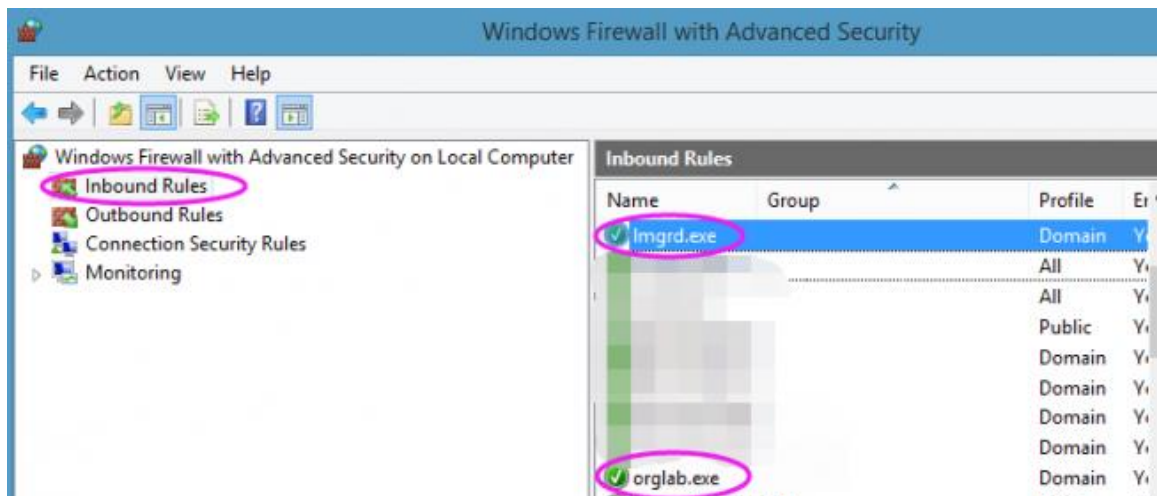
- [FLEXnet Server Setup for Windows](#)
- [FLEXnet Server Setup for Linux](#)

#### 5.5.1.3 [Allowing Access through a Firewall](#)

To allow access to the FLEXnet server from outside a Firewall, two port numbers must be opened on Firewall and added in license file. Below are step-by-step instructions of how to set it up. See Additional Tips below for information on FLEXnet at large sites, etc.

##### 5.5.1.3.1 At the Firewall

1. The FLEXnet server's internal IP address must have a corresponding external address on the Firewall.
2. Check if the FLEXnet server has Windows Firewall on. If so, add **Inbound Rules** to allow the following programs through the firewall. They are both under the FLEXnet Server's **Servers\** folder.
  - **LMGRD.EXE** - The FLEXnet License Manager.
  - **ORGLAB.EXE** - The Origin vendor daemon.



3. Select two dedicated TCP/IP port numbers outside 27000 -27009 range, for example, 61616 and 61617, and open them up in Firewall. They will be used in the steps below.
  - One port (61616) is for Imgrd.exe, License Server Manager, provided by FLEXnet.
  - The other (61617) is for orglab.exe, vendor daemon, created by OriginLab.

#### 5.5.1.3.2 On the FLEXnet Server

License file generated by OriginLab doesn't have port numbers by default. So you need to add port numbers you opened up in Firewall to the license file.

1. Stop the FLEXnet server if it is already running.
2. Open FLEXnet license file with a text editor.
3. Put one port number directly at the end of SERVER line, separately with SPACE.
4. Put the other port number at the end of VENDOR line starting with *port=*.
5. For example, if your opened port numbers are 61616 and 61617, you would edit the license file like this:

```
SERVER my_server 17007ea8 61616  
VENDOR orglab port=61617
```

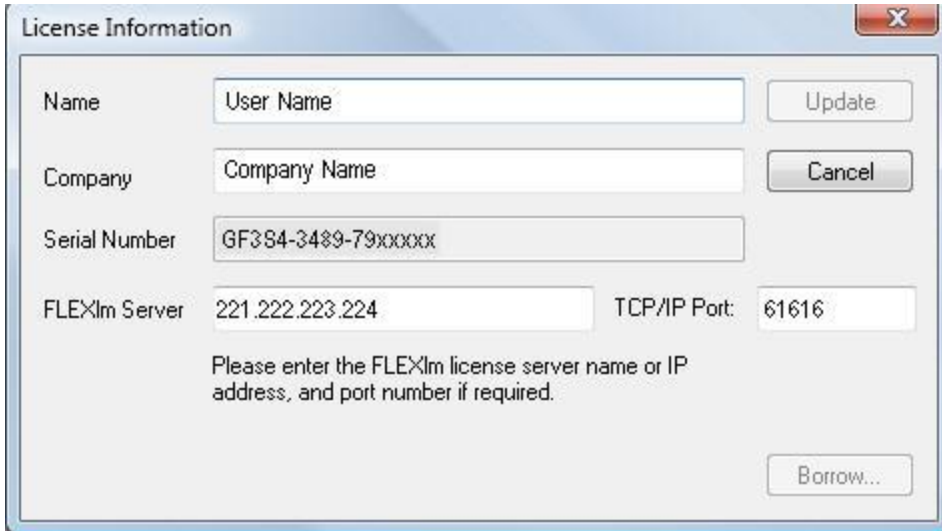
6. **Note:** you must add "port=" for the port on the *VENDOR* line, but not on the *SERVER* line.
7. Do not alter anything else in the license file and then re-save the license file.
8. Re-start your FLEXnet service.

#### 5.5.1.3.3 On Machines with Origin Client

Now all Origin users must restart their Origin and update License Information again. Here are the steps:

1. Enter the external FLEXnet server IP Address in the **FLEXIm Server** text box
2. Enter the port number on SERVER line in the **Port Number** text box  
Example: for the FLEXnet server whose external IP address on the Firewall is 221.222.223.224 and whose

**SERVER** port on the Firewall is 61616, the License Information dialog box would appear similar to:



#### 5.5.1.3.4 Troubleshooting

If Origin fails to connect with the FLEXnet Server through firewall,

1. Go back to FLEXnet Server machine and run LMTTools.exe. Go to Server Status tab to Perform Status Enquiry to make sure the server is running fine.
2. Go to Config Services tab to view Log.
3. Contact reginfo@originlab.com with the Log file attached.

#### Additional Tips

The above description will work for all situations where a Firewall sits between the FLEXnet server and the Origin client. However, in certain circumstances (for large sites, etc), some users may wish to take additional steps.

1. **FLEXnet server address vs. server DNS name:** In Origin's **License Information** dialog when you enter the server's IP address we are assuming that the address cannot be obtained from DNS. In situations where the FLEXnet server's name is in the DNS, then the server's fully qualified domain name can be entered in the **FLEXIm Server** text box.
2. For big site, updating Licensing Information dialog on each machine with Origin will be a lot of work. Editing USE\_SERVER.lic file may be better. If Origin had previously successfully connected to a FLEXnet service, then there will be a text file called USE\_SERVER.lic in the License folder. You can find where the License folder is by running Origin. Choose Preference: Options menu -> System Path tab. You can manually modify it.

Before adding the port number, the file will contain the following text:

```
SERVER <ServerName> ANY  
USE_SERVER
```

3. Where *ServerName* is the Host Name or IP Address of the FLEXnet server that Origin previously connected to.



4. To manually edit the Origin license file:
  1. Change *ServerName* to the Host Name or IP Address of the FLEXnet server
  2. After ANY, add the SERVER port number opened on the firewall  
 Example: for the FLEXnet server whose external IP address is 221.222.223.224 and whose FLEXnet server port on the Firewall is 61616, the USE\_SERVER.lic file should appear as:

```
SERVER 221.222.223.224 ANY 61616
USE_SERVER
```

#### 5.5.1.4 Adding Concurrent Users

To add more users to your concurrent network, you must first purchase the additional users from OriginLab or your Origin representative. Once this is done, you will receive notification that the order was processed. At that time, you should do the following:

1. Go to the OriginLab website.
2. Log into the OriginLab website with the same web membership account that you used to obtain the previous FLEX license file.
3. After logging in, you will see your "Origin Product Registration" page. Select the check box next to your serial number/version, and then click the Get FLEXnet License button located below the table.
4. A web page will now open with the Host Name and Host ID pre-filled. Click the Submit button.
5. You will now see the new license file text on the web page. Copy the license file text and paste it into a text editor.
6. Stop your FLEXnet service.
7. Back up your old license file, and then save the new license file so that it over-writes the old one.
8. Restart your FLEXnet service and verify that it is correctly reading the new license file.

#### 5.5.1.5 Setting up Three Redundant FLEXnet Servers

Origin supports the three-server redundancy as described in Macrovision's FLEXnet Licensing End User Guide, Chapter 3, section "Three-Server Redundancy".

Origin-specific information for setting up the FLEXIm services:

##### **5.5.1.5.1 Obtaining the License File**

After selecting the three FLEXnet servers, you must contact OriginLab to obtain the license file.

Email: RegInfo@OriginLab.com

In your email message, please state that you need a three redundant server license file, and include your Origin serial number, version, and the Host Name and Physical Address (Host ID) for all three computers.

OriginLab will email you back the license file.

##### **5.5.1.5.2 Editing the License File**

After receiving the license file, you must edit it as follows:

1. Your license file contains three SERVER lines. The server in the first SERVER line is the MASTER. To set a different server as the master, change the SERVER line order in the license file.
2. Next, you must add a TCP/IP port number to each SERVER line in the license file. For each SERVER line (FLEX server), the TCP/IP port can be any unused port on that machine, as long as it is between 1024 to 32000. So for each FLEX server, you need to find an unused port within this range, and then specify that port number on the respective SERVER line of the license file. You can use the same port number on each SERVER line (assuming this port number is unused on each), or you can specify different port numbers. Here is an example in which the same port number (2837) is unused on all three machines, and specified on the SERVER lines:

```
SERVER hostname1 hostid1 2837
SERVER hostname2 hostid2 2837
SERVER hostname3 hostid3 2837
```

#### 5.5.1.5.3 Setting up the FLEXnet Services

Once you've [set up the service on each machine](#), then start each service.

Then perform a status enquiry on each of the machines (you want to make sure all three machines "detect" the other two machines).

The status should report detection of the three LMGRD processes. Also, your MASTER server should be tagged "MASTER".

#### 5.5.1.5.4 Setting up Origin

Once you have the three services running OK, then you should start Origin. You will see the **License Information** dialog box at start up. You should edit it as follows:

**FLEXlm server text box:**

Enter the three FLEXlm server host names or IP addresses, separated by semi-colons, following the order in the license file. Such as like this:

```
hostname1;hostname2;hostname3
```

**TCP/IP Port text box:**

But also, because there are port numbers on each SERVER line in the license file, then you must also enter the port numbers in the TCP/IP Port text box. Again, they should be entered in the same order as in the license file, and separated by semi-colons. Such as like this:

```
2837; 2837; 2837
```

(In this case the port numbers are all the same. But if they were different, then you would need to follow the order in the license file.)

#### 5.5.1.6 Restricting Origin Use with an Options File

##### 5.5.1.6.1 General Information

Decide if you want to restrict Origin usage with an options file. For example, you may want to allow only specified users to run Origin, or to borrow Origin. Or you may want Origin's licenses to check back in due to inactivity. Or you may want to restrict specified users from running Origin. Or perhaps your organization has multiple groups of Origin users, and you want to restrict the number of users in each group who can run Origin concurrently. For each of these needs, you can use an options file.

Origin supports the use of an options file as described in the LicenseAdministrationGuide.pdf installed into the Origin FLEXnet server Help folder.

We recommend that you name the options file *orglab.opt* and that you save the options file into the same folder as your Origin license file. If you do this, then you do not need to make any change to your license file.

### 5.5.1.6.2 Examples

**Example 1:** 10 OriginPro licenses are reserved for computers located on two subnets defined by IP, 4 OriginPro licenses are reserved for computers on a third subnet defined by IP and all OriginPro licenses are set with a 15 minute check-in for inactivity:

```
HOST_GROUP CHEM_BIO_subnets 149.171.194.* 149.171.195.*
HOST_GROUP PHYSICS_subnet 129.94.216.*
RESERVE 10 OriginPro HOST_GROUP CHEM_BIO_subnets
RESERVE 4 OriginPro HOST_GROUP PHYSICS_subnet
TIMEOUT OriginPro 900
```

**Note:** The TIMEOUT minimum is 15 minutes, or 900 seconds. The seconds must be entered in the options file in order for Origin or OriginPro to check the license in when inactive for that length of time. You must include the FEATURE name with TIMEOUT, either Origin or OriginPro needs to be included in the syntax in the Options File. Such as, TIMEOUT Origin 900 or TIMEOUT OriginPro 900. If your license includes both Origin and OriginPro, you must add one line for each FEATURE specifying the TIMEOUT time in your Options File.

**Example 2:** restricts users from running Origin based on IP address:

```
HOST_GROUP exclude_these_computers 10.10.10.37 10.10.10.57
EXCLUDEALL HOST_GROUP exclude_these_computers
```

**Example 3:** restricts users from running Origin based on computer name:

```
HOST_GROUP exclude_these_computers computer1 computer2
EXCLUDEALL HOST_GROUP exclude_these_computers
```

**Example 4:** defines a group of users that can run OriginPro, and then a second group of users that can also run OriginPro in borrow mode.

```
GROUP origin_users user1 user2 user3 user4 user5 user6
INCLUDEALL GROUP origin_users
GROUP origin_borrowers user1 user4
INCLUDE_BORROW OriginPro GROUP origin_borrowers
```

**Example 5:** disable the borrowing of licenses for all users.

```
BORROW_LOWWATER OriginPro n
where n is the total number of users in the organization.
```

Disable the borrowing of licenses for a group of defined users

```
GROUP exclude_borrowers user1 user2
EXCLUDE_BORROW OriginPro GROUP exclude_borrowers
```

**Example 6:** reserves one concurrent license for the specified user (Bill). This is case sensitive.

```
RESERVE 1 OriginPro USER Bill
```

**Example 7:** licenses are reserved for a group of users. In this example, there is only one member of the group. The user name is not case sensitive.

```
GROUPCASEINSENSITIVE ON
GROUP ReservedUsers bill
RESERVE 1 OriginPro GROUP ReservedUsers
```

**Example 8:** reserves licenses for users, machines and ip addresses, all case insensitive.

```
GROUPCASEINSENSITIVE ON
HOST_GROUP ReservedHostMachines einstein currie galileo 123.123.123.123
456.456.456.456
GROUP ReservedUsers Jack Jill Hansel Gretel
RESERVE 1 OriginPro USER bill
```

```
RESERVE 4 Origin GROUP ReservedUsers
RESERVE 1 OriginPro HOST kepler
RESERVE 5 Origin HOST_GROUP ReservedHostMachines
```

**Example 9:** Suppose you are running a combined license of two OriginPro serial numbers, GF3S4-3089-7911111 and GF3S4-3089-7922222. The following example reserves 2 license of serial number GF3S4-3089-7911111 for host group *CHEM\_BIO\_subnets*, and reserves 1 license of serial number GF3S4-3089-7922222 for host group *PHYSICS\_subnet*.

```
HOST_GROUP CHEM_BIO_subnets 149.171.194.* 149.171.195.*
HOST_GROUP PHYSICS_subnet 129.94.216.*
RESERVE 2 OriginPro:user_info=GF3S4-3089-7911111 HOST_GROUP CHEM_BIO_subnets
RESERVE 1 OriginPro:user_info=GF3S4-3089-7922222 HOST_GROUP PHYSICS_subnet
```

Host groups are defined in IP addresses. The **feature:keyword=value** syntax is used to distinguish a particular group of licenses when there are multiple Serial Numbers for a single feature. Here **OriginPro:user\_info=GF3S4-3089-7911111** specifies the serial number "GF3S4-3089-7911111" pool of licenses for feature OriginPro.

**Note:** **feature:keyword=value** does not work for TIMEOUT at the moment.

#### 5.5.1.7 Mixed Origin and OriginPro Concurrent Network Package

OriginLab offers a Mixed Origin and OriginPro Concurrent Network Package where one server license can have both an Origin product line and an OriginPro product line. In such packages, OriginPro installed with an OriginPro serial number can check out an Origin Standard license to use Origin Standard features and can manually be switched back to OriginPro to use OriginPro features if an OriginPro license is available. Origin Standard installed with an Origin Standard serial number cannot check out OriginPro licenses even if it is available. Your Software Administrator may want to assign some users who only need the Origin Standard features with an Origin Standard serial number to lower the risk of fighting for OriginPro licenses or contact OriginLab to increase the number of OriginPro licenses.

#### 5.5.1.7.1 **Obtaining a License for a Mixed Concurrent Network Package**

This package comes with two serial numbers: One for Origin Standard, the other for OriginPro. The last seven digits of the serial numbers are the same.

1. Log into <https://www.originlab.com/reginfo>.
2. Click on "Register new serial number".
3. Select "I want to register my Origin software and obtain a license file for a computer", click on Next.
4. Select your Origin version and enter your Origin serial number. (Note: You can use either the Origin Standard serial number or the OriginPro serial number. The website will detect if it is Mixed Origin and OriginPro and generate a proper license.) Click on Next.
5. Enter Host Name and HostID of your server, click on Submit. A license will be generated for you. It has two FEATURE lines, one for Origin Standard and the other for OriginPro.
6. Please follow the [FLEXnet Server Setup](#) procedures to install and start the FLEXnet Server.

#### 5.5.1.7.2 **Connecting to the FLEXnet Server**

1. Install Origin with the OriginPro or Origin Standard serial number.
2. Start Origin by double-clicking the Origin program icon.
3. A License Information dialog will open. Enter FLEXlm Server name (and TCP/IP Port if needed). Click on the Update button to check out licenses from the FLEXnet Server.

1. Both Origin Standard and OriginPro will start as Origin Standard giving a Standard license available. This is because usually there are less Pro licenses than Origin standard licenses. Your Software Administrator may not want OriginPro licenses be taken unless a user really needs to use OriginPro features.
2. If all Origin Standard licenses are taken, OriginPro will check out OriginPro licenses.
4. The title bar of the application will say "Origin" or "OriginPro" depending on what license is currently in use. If a Standard license is checked out, OriginPro features will not be available.

### 5.5.1.7.3 Switching between Origin and OriginPro

1. Click on the Help menu and select About Origin.
2. Click on License...
3. The License Information dialog will open.
4. Select the OriginPro radio button and click the Update button.
5. If an OriginPro license is not available, you will see a message "OriginPro license is not currently available. Please try again at a later time."
6. If an OriginPro license is available, you will see a message "Your license has been updated successfully". You must restart OriginPro before the OriginPro features become active. If after restarting the title bar says "Origin" and not "OriginPro" then the OriginPro license has been checked out by another user in the mean time. You will only have the Origin Standard features available.
7. Once Origin Standard is switched to OriginPro, it will stay as OriginPro afterwards, unless:
  - o You switch it manually to Origin Standard again in the License Information dialog.
  - o There are no OriginPro licenses available then Origin will try to check out an Origin Standard license if available. Only Origin Standard features will be available.

## 5.5.2 Update License After Maintenance Renewal

After you renew your maintenance, you should obtain a new FLEXnet server license. This license will contain your new maintenance expiration date. Your Origin users will thus no longer see a maintenance renewal message, and their About Origin dialog will show the correct new maintenance expiration date.

After your maintenance renewal has been processed, please perform the following steps to obtain your new FLEXnet server license:

1. Go to <https://www.originlab.com/reginfo>.
2. Log in with the same web membership account that you used to obtain the previous FLEX license file.
3. After logging in, you will see your "Manage my License(s)" page. Select the check box next to your serial number/version, and then click the **Get FLEXnet License** button located below the table.
4. A web page will now open with the Host Name and Host ID pre-filled. Click the **Submit** button.
5. You will now see the new license file text on the web page. Copy the license file text and paste it into a text editor.

6. Stop your FLEXnet service.
7. Back up your old license file, and then save the new license file so that it over-writes the old one.
8. Restart your FLEXnet service and verify that it is correctly reading the new license file.

### 5.5.3 If you are upgrading a Concurrent Network package

If you already have a FLEXnet service for managing your previous version of Origin, then you just need to obtain a new license for the current version, and update your service to run with that new license. Once done, the updated FLEXnet service will allow your users to start running your new Origin version, and they can continue running their previous Origin version\*. The service will count the total number of users running Origin and will restrict it to the purchased number.

**Note:**

1. To avoid any license and security issues, please update your FLEXnet server to the latest version. See [here](#) for details.
2. For 8.0, users must run SR2 or higher. For 7.5, users must run SR7.

#### 5.5.3.1 Steps to obtain the new license and update your service with this license:



#### [Watch the video tutorial - Updating your FLEXnet Service to Use the Latest Origin Version](#)

1. Go to the <https://www.originlab.com/reginfo>.
2. Log into your web membership account that registered the serial number. Click "Manage my License(s)" link. Then click the Register New Serial Number button.
3. Select the "I want to register my Origin software and obtain a license file for a computer" radio button and click Next.
4. Select Your Origin version and select/enter Your Origin Serial Number (same as your previous version).
5. Enter your FLEXnet server host name and Ethernet (Mac, Physical) Address and generate your license.
6. Copy the license text from the OriginLab website.
7. Stop your FLEXnet service if it is running.
8. Browse to your FLEXnet server license file and save a back-up to a different location.
9. Then open your FLEXnet server license file in a text editor. Replace the current license text with that obtained from the OriginLab website.
10. Re-save the license, making sure you have saved to the same location and with the same file name. Warning: On Windows Server 2008, 2012, Windows Vista, 7, 8, 8.1 and 10, make sure your updated license file was saved to the correct folder, rather than in the Windows VirtualStore.
11. Restart your FLEXnet service and perform a status enquiry to make sure it is running correctly.



If the server cannot start after replacing the license file, it is probable that the server doesn't stop successfully in step 7. Please open the **Task Manager** dialog--> **Services** and check if any Origin license server running in the background. If yes, stop and restart it.

#### 5.5.3.2 See Also

- [Can I allow previous versions to run on my upgrade license to allow extra time to upgrade the client installations?](#)

### 5.5.4 Deactivate License on Server

A system transfer is only required if you need to replace the FLEXnet license server. It is not needed when replacing an Origin computer.

To deactivate a license, you must fill out a System Transfer Request form on the OriginLab website.

1. Go to <https://www.originlab.com> and log in.
2. Click "Manage my License(s)" on the Welcome page.
3. Select the check-box next to your serial number and then click on **Report a licensed server no longer in use** button at the bottom.

### 5.5.5 Moving the FLEXnet Server and Updating Members of the New Location

If you need to install and set up a FLEXnet license server on a different machine, do the following:

1. [Deactivate license on the original server machine.](#)
2. Set up FLEXnet server on the new machine.
3. After the replacement FLEXnet server is running successfully, you can edit the USE\_SERVER.lic file on the client machines. The USE\_SERVER.lic file is located in the License folder:
  - o Origin 2017 and Later Versions - Windows Vista, 7, 8, 8.1 and 10 - C:\ProgramData\OriginLab\License
  - o Origin 2016 - Windows Vista, 7, 8, 8.1 and 10 - C:\Users\Public\Documents\OriginLab##\License
  - o Origin 2015 and Earlier Versions - Windows Vista, 7, 8, 8.1 and 10 - C:\ProgramData\OriginLab##\License

This file will typically have the following text, assuming the FLEXnet server is <FLEXnet server>

```
SERVER <FLEXnet server> ANY
USE_SERVER
```

A 3-Server Redundant FLEXnet server is also supported, for example if we have three servers <one>, <two>, <three>, and ports 12345, 23456, 34567, the USE\_SERVER.lic file looks like:

```
SERVER <one> ANY 12345
SERVER <two> ANY 23456
SERVER <three> ANY 34567
USE_SERVER
```

**Note:** if you have a multiple seats package, the Group Folder feature provides an easy mechanism to update all the group members with the new FLEXnet server. Please refer to [this page](#).



## 6 Student License

**NOTE:** This instruction is for Origin 2017 and later. If you have version 2016 or earlier, please refer to [this page](#).

### 6.1 Important Notes!

- The Student License allows you to install OriginPro on ONE personal computer.
- If you purchased a 1-yr Student License from the OriginLab Online Store, you are eligible for a software upgrade if a new product is released before your 1-yr license expires. Six-month Student Licenses purchased from OnTheHub are NOT upgradeable.
- If you choose to upgrade your student version, you must install and license the new version on the computer with the old version installed. If you wish to move your license to a new computer before upgrading, you must deactivate the license on the old computer before installing the upgrade to the new computer (see [License Deactivation](#), below).

### 6.2 Get Product Key

#### If you purchased the product from OriginLab or its distributors

1. After purchasing, you will receive an email containing your Origin serial number and a registration link,  
*or*  
a printed License Certificate containing your Origin serial number and a registration code,  
*or*  
a Registration Code from your Origin distributors
  - If you receive the email,
    2. Click the registration link to go to the OriginLab website. You will be asked to log in or join. Log in if you have an account or create an account as needed.
    3. After logging in, your registration code and serial number information will be displayed on the web page. Click the **Register** button to register this serial number and generate your product key.
    4. On the Origin Product Registration|License request history page that opens, (1) product key is generated.
  - If you receive the printed License Certificate or Registration Code from distributors,
    2. Open OriginLab website (www.OriginLab.com) manually. Log in or create an account as needed.
    3. On the Welcome page, click the "Register my product -version 2017 (9.4)" link.
    4. On the Register my product page, enter the registration code as requested and click **Continue** button to register this serial number and generate your product keys.
    5. On the Origin Product Registration|License request history page that opens, (1) product key is generated.

### If you purchased the product from OntheHub (for US and Canada only)

1. After purchasing, you will receive an email containing your Origin serial number and Product Key.

## 6.3 License Activation

1. Receive your serial number and the associated product key from Origin administrator.
2. Start Origin. A [License Activation dialog](#) opens.
3. With the option **Enter Product Key below and click Activate** selected, enter your product key. Then click **Activate**.
4. The license process will then be done in background. If successful, you will get a success message.

### If the background licensing process fails, please continue the following steps:

5. If the licensing process fails for some reason (for example, no internet connection, or OriginLab.com blocked by firewall, etc.), a Notepad window opens with a link in it.
6. Copy this link to a web browser which has internet connection. The link will bring you to OriginLab website.
7. The license text will be generated and displayed on the web page.
8. Copy the license text and paste it back to Origin's **License Activation dialog**. Click **OK**.

### See Also:

- [Activation for Single-User Node-Locked](#)
- [Activation for Multi-User Node-Locked](#)

## 6.4 License Deactivation

When you plan to transfer your licensed Origin from one computer to another, you will need to deactivate the license from the original computer and then get a new license for the new computer.

### 6.4.1 If Origin can still run on your computer

1. Start Origin. Select **Help: Deactivate License** to open the **License Deactivation** dialog.
2. Click **Deactivate Now** button.
3. The license deactivation process will then be done in background. If successful, you will get a success message.

### If the background deactivating process fails, please continue the following steps:

4. If the background deactivating process fails for some reason (for example, no internet connection, or OriginLab.com blocked by firewall, etc.), a Notepad window opens with a link in it.
5. Copy the link to a web browser which has internet connection.
6. The web page displays your license information. Make note of the **Deactivation Code (DC)**.
7. Go back to Origin. Enter the **Deactivation Code** in the deactivation code edit box at the bottom of the **License Deactivation** dialog. Click the **Deactivate License** button.

8. A Notepad window opens with a link in it. Copy the link to a web browser which has internet connection.
9. Click the **Continue** button on the website. Then you see a success message tell that one license is released for re-use.

#### 6.4.2 If your licensed Origin computer is no longer available

1. Go to [www.originlab.com/reginfo](http://www.originlab.com/reginfo) and log in.
2. Click on your serial number that you are deactivating and then on "Go" link in the **Deactivation** column.
3. On the **Deactivate Origin from a device** page, confirm the information and click **Continue** to deactivate. If the deactivation succeeds, you will get a success note and the product key can be re-used.
4. If the deactivation fails, the page automatically transfers you to the **System Transfer Request Form**. Fill out the form as requested and submit it.

#### FAQ

- [After upgrading my Operating System Origin asks me for a license](#)

### 6.5 Update Your Origin to a newer version

You are eligible for a software upgrade if a new product is released before your student license expires. Complete the following steps to upgrade your Origin and activate it.

**If you choose to upgrade your student version, you must install and license the new version on the computer with the old version installed.**

1. Download the new version from OriginLab website. Install it.
2. Start Origin. The license process will then be done in background automatically. If successful, you will get a success message. If failed, a Notepad window opens with instruction. Follow the instruction to activate Origin manually.

**If you wish to move your license to a new computer before upgrading, you must deactivate the license on the old computer before installing the upgrade to the new computer.**

See the detailed deactivation instruction in [License Deactivation section](#).



## 7 Trial License

### 7.1 To obtain a Trial license

1. Start Origin. The **Trial License Options** dialog is opened.
2. Select **Get a free 21 day trial license now** and click **OK**.
3. Your web browser will open to the Request for 21-day Trial License page. Click the **Continue** button.
4. Log in as requested.
5. Verify that your email address is correct in your User Profile (the license will be sent to that email address).
6. Click **Get Trial License**.
7. Copy the license from the email you receive, and paste it into Origin in the first box.
8. Enter the email address the license was sent to in the second box.
9. Click **OK**.

You should see a message stating that your license has been successfully updated. Origin will run the Trial for 21 days.

#### NOTE

1. If you installed the Origin (or OriginPro) trial but you really want to trial OriginPro (or Origin), you can check (or uncheck) **Help: Run Trial as OriginPro** to convert it to a Pro (or Standard) version.
2. With purchased software, there is a need to deactivate a license before moving the license to a new computer or reassigning the license to a new user. This does NOT apply to a Trial License.

**7.1.1.1 If the Trial is installed on your computer and you want to convert that Trial to a Product (requires serial number), see [this FAQ](#)**

### 7.2 See Also

- [Why is there a watermark on my graphs?](#)
- [Do we need trial licenses for multiple computers?](#)



## 8 Dongle License for V2019 or earlier

### 8.1 Get Started with Your Dongle

1. Install Origin with the dongle Serial Number.
2. Plug in the Dongle key to the USB port.
3. Right-click on Origin icon and select **Run as Administrator** to launch Origin for the first time.
4. The **Registration** dialog will open. Registration is not compulsive, but it will help you to receive better support from us.

To register Origin, please

1. Click the **Click here to Register on-line and receive your Registration ID** button.



2. Your web browser will be opened to OriginLab website. Log-in or create an account.
3. A Registration ID will be created for you. Copy this ID and paste it back to Origin

If you don't want to register at the moment, select the **Register later** option. Next time you open Origin the **OriginLab Registration** dialog will open to remind you of the registration.

### 8.2 See Also

[I see a Dongle driver error message, Notepad or am asked to enter a license. What is wrong?](#)





## 9 Dongle License

Starting from Origin 2019, dongles are cross-version.

### 9.1 Activate Your Dongle

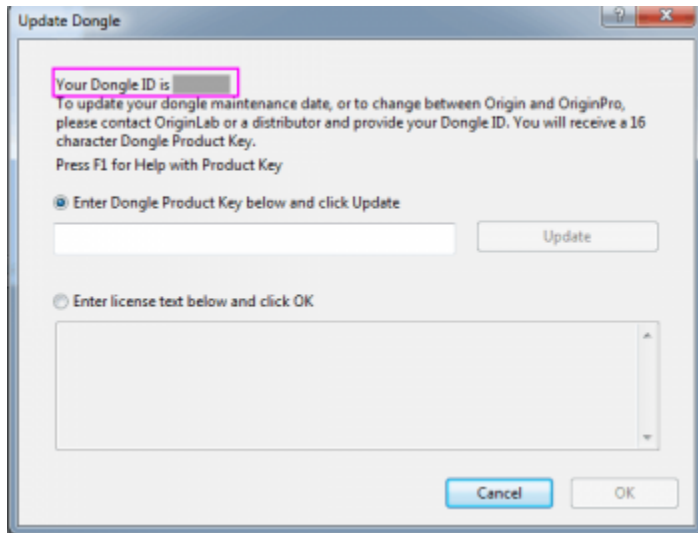
#### 9.1.1 If you purchased a new dongle,

You will receive a unique dongle from OriginLab or distributors. The **Dongle ID** is printed on the dongle.

You can then install Origin with the dongle Serial Number. Plug in the dongle to the USB port to use Origin.

#### 9.1.2 If you have a dongle for Origin 2019 or later and your Maintenance entitles you to upgrade to the latest version,

1. Install the latest version of Origin with the dongle Serial Number.
2. Plug in the dongle to the USB port.
3. Double-click on Origin icon to launch Origin for the first time. If the **Update Dongle** dialog opens, continue the following steps to upgrade your dongle. If not, your dongle is ready for the new version.
4. Take a note of the **Dongle ID** at the top of the dialog.



5. Contact OriginLab or your distributor and provide your Serial Number and Dongle ID. You will receive a 16 character Dongle **Product Key**.
6. Start Origin. If the **Update Dongle** dialog is not open, select menu **Help: Activate License** to open it.
7. With **Enter Dongle Product Key below and click Update** selected, enter your product key and click **Update**. Note that internet access is not required in most cases.
8. The licensing process will then run in the background. If successful, you will get a success message.

Once complete, you can use this dongle for Origin installed with the same Serial Number on any other computers without reactivating the dongle.



Note that the dongle of latest version still allows you to use previous versions of Origin down to v2019. However, using Origin 2019(b) may deactivate the dongle for version 2020 or higher. So we always recommend staying with the new version. If you really need to use Origin 2019(b) and see a message asking for activation when returning to the new version later, please follow the above steps to reactivate it.

### 9.1.3 Register Your Origin

Registration is not required, but it will help the Support Team provide better support.

To register Origin, please

1. Select menu **Help: Register on-line** to open the **Registration** dialog.
2. Click the **Click here to Register on-line and receive your Registration ID** button.
3. Your web browser will be opened to OriginLab website. Log-in or create an account.
4. A Registration ID will be created for you. Copy this ID and paste it back to Origin

## 9.2 Update Your Dongle after Maintenance Renewal

After your [Maintenance](#) renewal has been processed, complete the following steps to update your dongle.

1. You will receive a new Dongle **Product Key** from OriginLab or your distributor. .
2. Plug in the Dongle to the USB port.
3. Start Origin. Select **Help: Activate License**. It will open the **Update Dongle** dialog. Enter the product key. Click the **Update** button. Note that internet access is not required in most cases.
4. After the activation process is completed, select **Help: About Origin** to confirm the updated maintenance expiration date is correct.

**Note:** If you have a  $n$ -seat group dongle serial number, you will have  $n$  dongles. You will need to update each dongle as above after renew your Maintenance.

## 10 Install or deploy Origin to the user's computers or a file server

This page provides Origin deployment documentation for both the Concurrent Network and the Multi-seat Node Locked packages.

### 10.1 Things to consider before getting started

Methods for distributing Origin

OriginLab offers two types of installers:

- **InstallShield Setup** - Available on the DVD, trial download, and by a download link in an email after purchase. (Note: For multi-user deployment purpose, please choose to download the zip format, not the exe format.)
- **MSI Installer** - Download [here](#)

#### Advantages of InstallShield Setup

The advantage of the InstallShield Setup is that it checks if required Microsoft (MS) DLLs are present on the computer, and if not, the InstallShield Setup automatically runs the required MS installers to install the DLLs.

This differs from the MSI - the Origin MSI installers are not able to automatically run the MS installers. So if you deploy Origin from an MSI, you may want to include the MS installers and a batch file to install them.

#### Advantages of MSI Installer

To deploy Origin with Group Policy(GPO) you can only choose MSI Installer and not InstallShield Setup.

The MSI installer allows you to prepare a script so users can install Origin silently. A .ini file is used to pre-set the serial number, install folder, User Files Folder (users are asked to select this at first start-up), etc. For concurrent packages, you can also preset the FLEXnet server.

Although InstallShield setup can use a .ini file, MSI installer is a preferred type for multiple-user deployment. It allows administrators to use another "Transform" (MST file) to pre-set more configuration or replace data in the MSI installation database. More information about Transforms can be found [here](#).

The following instructions apply to both InstallShield Setup and MSI Installer.

### 10.2 Prepare your customized settings with the installer

#### 10.2.1 Customize Installation Settings with Config.ini

##### 10.2.1.1 [What is Config.ini and what can it do](#)

Config.ini file is a configuration file to preset/customize installation settings. It is available from Origin 2019. For InstallShield Setup, it's shipped with Origin setup file (the zip format installer). For MSI Installer, it can be downloaded separately.

##### 10.2.1.1.1 [What's in Config.ini?](#)

It is optional to configure the following settings in **Config.ini** file. You can open it in a notepad editor to view and modify it. Detailed comments are included to help you understand each setting.

##### 10.2.1.1.1.1 Installation Settings

Preset all installation data in *[Setup]* section:

- preset Serial Number, User Name and Company information, installation path, whether to install embedded Python and SPSS import module.
- determine whether to install Origin silently (Note: This only applies to InstallShield Setup. To install MSI silently, you can run the command line with the /quiet switch.)

**Note:** If you set QuietMode = 1 to install Origin in silent mode, you must preset the following items.

AcceptOriginLabLicenceAgreement=1

SN=

UserName=

Company=

Other items will use the following default values if not specified

InstallPath=C:\Program Files\OriginLab\Origin####

EmbeddedPython=1

SPSSImport=0

AllUsers=1

ProgramFolder=C:\ProgramData\Microsoft\Windows\Start Menu\Programs\OriginLab  
Origin ####

#### 10.2.1.1.1.2 Origin Folder Path

- User Files Folder
  - preset User Files Folder in *[Locations]* section
  - determine whether to show the [User Files folder dialog](#) with preset path when launching Origin the first time
    - AutoSave, Backup and Unsaved Project Folders
  - preset the root folder for AutoSave, Backup and Unsaved project folders in *[Locations]* section
    - Apps
  - preset Apps folder in *[Apps]* section

**Note:** If **Config.ini** has preset folder paths (for example User Files or AutoSave folder), they will be used instead of inheriting the old settings from previous version.

#### 10.2.1.1.1.3 License Management

- For Concurrent Network package, enter the concurrent license server and port number (if any) into the *[License]* section of config.ini.  
If Origin has been installed before, you can also decide whether to update the current server information or not by setting the Replace option. (Note: The Replace option is only available with the InstallShield Setup config.ini file, but not the MSI installer.)
- If you need to increase the maximum time Origin waits for a response back from the concurrent license server, for example, if you have an unstable or slow network connection, you can preset system environment variable FLEXLM\_TIMEOUT (in microsecond) into the *[License]* section of config.ini. For example, to set FLEXLM\_TIMEOUT to 5 seconds,

```
[License]
FLEXLM_TIMEOUT = 5000000
```

- The default value of FLEXLM\_TIMEOUT is 3000000 (3 sec). If a larger value already exists, no update occurs unless you force it by setting

```
FLEXLM_TIMEOUT_FORCE=1
```



Please see [this FAQ page](#) for more information.

## 10.2.2 Optional Steps

### Preset product key

If you have a Multiple-User Node-Locked license and you want to preset product keys for the end users so their Origin can get activated automatically, you can request a [Group Product Key](#), and save it to a pk.txt file in the folder where the installer files locate.

### Preset customized files like interface settings, templates, fitting functions, etc.

If you want to pre-customize end users' Origin like menus and buttons, graph templates, fitting functions, etc., you can create a **UpdateUserFiles** folder in the folder where the installer files locate, and put the customized files (OMC, XML, ogwu, fdf, etc.) to the UpdateUserFiles folder. They will be copied to each user's User Files folder when they start Origin for the first time.

### Preset opx/opk files

Two mechanisms are available:

- Create a folder named *UpdateUserFiles* in the Origin setup folder (with Setup.exe or MSI) and it will be copied to the Origin Program Folder. When Origin runs, it is copied to the UFF.
- Create a folder named *Auto Install* in the Origin setup folder (with Setup.exe or MSI) and it will be copied to the Origin Program Folder. When Origin runs, contained opx/opk are auto-installed.

### Preset registry-stored system variables

Open *Config.ini* in the Origin setup folder (with Setup.exe or MSI) with notepad. Locate *[SysVar]* section and add system variables you want to preset here. When Origin is installed, the specified system variables will be set.

## 10.2.3 Distribute your Origin installation package

1. Copy the Origin Setup files into a folder on computer "A". **Note:** Computer "A" must be on a network to which all potential Origin users can connect.
2. Make sure the modified **Config.ini**, **pk.txt** file and **UpdateUserFiles** folder (if have) are in the Origin Setup folder where setup.exe is located.
3. Share this folder with FULL READ/WRITE privileges and note its UNC share name. (e.g. \\A\Origin\)
4. Email to all users to ask them to run the setup.exe/msi file. Users must be logged into their computers with a log in account that has administrative privileges and they must be on the network and they have access to \\A\<Origin Setup folder>.

### Note:

- This installation method only installs Origin onto the target computers.

- For Concurrent Network packages, registration is optional. If user wants to register Origin, he/she can select menu **Help: Register on-line** to open the **Registration** dialog to register himself/herself.

#### 10.2.4 MSI Installation

For detailed information about how to setup an installation package with MSI installer, please refer to [this page](#).

### 10.3 Post Installation Updates by Group Folder

The group folder is an optional feature Origin provides to distribute files. It can be used by any site/organization that has multiple Origin users managed by any license type. Even though the group leader and group members have different license types, sharing files between them by using Group Folder is available.

The Group Folder feature involves setting up one or more group leaders. For example, group leaders could be established at the department level of an organization. All or any number of Origin and OriginPro users in the organization can share the same group leader or leaders. Leader(s) can serve as a source for distributing custom Origin files and patches to members of the group.

Once you set up a group leader, you can set up the Origin in your organization so that it is predefined to receive updates from the group leader.

#### 10.3.1 Set up Group Leader(s) and Group Members

The first step is to [set the Group Folder for the group leader machine](#).

Next, you can [set the Group Folder for the member machines](#).

#### 10.3.2 Use the Group Folder Manager to Publish Files

Group leader uses the [Group Folder Manager](#) to add, update, or remove files to group folder and then publish them to members of the group. Please refer to the [Group Folder Manager document](#) for detailed steps of how to use this tool.

After the group member specifies the group folder, and upon subsequent Origin start-ups, if newer files exist in the group folder, the group member will see a message telling them that files are updated (only for support files, not patches), or an update is now available and a re-start of Origin is required to receive the updates (for patches).

The supported files from the shared group folder are copied to the group member's `\GroupShared\` folder located in their **User Files Folder**.

The files then become available in various Origin dialogs such as Theme Organizer, Fitting Function Organizer etc. The files will have a prepend tag of (Group) to identify them as originating from the group folder.

##### 10.3.2.1 Types of Files that can be Published

- **Supported Origin files**, such as project, templates and fitting functions.  
**Note:** if you have some pre-defined [system variables](#) and want to share them via opx file, you will need to move the opx out of `\GroupShared\` folder under the User Files folder. Otherwise the opx file will not be auto installed.
- **Publish Origin Service Releases.**  
Within a version, OriginLab typically releases one or more [service releases](#) to fix problems found in the release version. Typically, the service release is provided as a patch.

1. You must first patch the group leader machine. Once done, re-start the group leader.

Install or deploy Origin to the user's computers or a file server

2. Use **Group Folder Manager** to publish the patch file that you applied to the group leader.
3. Now when the Origin group member starts their Origin, they will see a message that a patch is available from the group leader. They can choose to apply the patch, close Origin, and the patch program will start running.

- **Move the FLEXnet Server and updating members of the new location (Concurrent Network packages)**

If a FLEXnet service is moved to a different machine, the Group Folder feature can be used to update the members of the Concurrent Network package with this new location.

1. After you set up the replacement FLEXnet server and have the service running successfully, you can edit the USE\_SERVER.lic file located in the group leader's hidden License folder. Located:  
C:\ProgramData\OriginLab\License

This file will typically have the following text, assuming the FLEXnet server is <FLEXnet server>

```
SERVER <FLEXnet server> ANY  
USE_SERVER
```

2. A 3-Server Redundant FLEXnet server is also supported, for example if we have three servers <one>, <two>, <three>, and ports 12345, 23456, 34567, the USE\_SERVER.lic file looks like:

```
SERVER <one> ANY 12345  
SERVER <two> ANY 23456  
SERVER <three> ANY 34567  
USE_SERVER
```

3. Once this change is made and the Origin group leader can connect to the new server successfully, you can put the USE\_SERVER.lic file to the Group Folder to publish it. The Origin group members will be notified of the change of FLEXnet server with a message "Concurrent license server settings are updated. Click OK to restart".





## 11 License for Version 2016 and Before

### 11.1 License for Version 2016 and Before



These license instructions are for 2016 and older versions. License system is updated since version 2017. If you have Origin 2017 and later, please see instruction [here](#).

Check your **License Type** against your **Serial Number** and follow the relevant link to the **Help Topic** for installation information.

License Type	Serial Number	Help Topic
<b>Single-User Node-Locked</b>	xFxxx-9xxx-70/71/72xxxxx xFxxx-6xxx-70/71/72xxxxx	<a href="#">Single-User Node-Locked License</a>
<b>Multi-User Node-Locked</b>	xFxxx-9xxx-76xxxxx xFxxx-6xxx-76xxxxx	<a href="#">Multi-User Node-Locked License</a>
<b>Concurrent Network</b>	xxxxx-2xxx-79xxxxx xxxxx-3xxx-79xxxxx	<a href="#">FLEXnet Server Setup for Windows</a>
		<a href="#">FLEXnet Server Setup for Linux</a>
		<a href="#">FLEXnet Client Startup</a>
		<a href="#">Additional Information for Concurrent Licenses</a>
<b>Student</b>	xxxxx-xxxx-72xxxxx (1 year) xxxxx-xxxx-76xxxxx (6 month)	<a href="#">Student License</a>
<b>Dongle</b>	Shipped with Dongle	<a href="#">Dongle License</a>

### 11.2 Single-User Node-Locked License for V2016 and Before

You have a *Single-User Node-Locked* license if your serial number is:

xFxxx-9xxx-70/71/72xxxxx, or  
xFxxx-6xxx-70/71/72xxxxx.

If your serial number is:

xxxxx-2xxx-79xxxxx, or  
xxxxx-3xxx-79xxxxx,

then you have a *Concurrent Network* license and the information on this page is NOT relevant to you.

A *Single-User Node-Locked* package entitles you to install Origin on (1) computer. You will need to get a license (*Office License*) for this computer from OriginLab website, and the license is computer-specified. With your Maintenance active, you can get (1) *Home-Use* license for your notebook or home computer. This license runs in conjunction with your Maintenance and you will keep it as long as you renew Maintenance.

If you want to replace the licensed Origin computer, you will need to deactivate the license before you can get a new one for the new computer.



These license instructions are for 2016 and older versions. License system is updated since version 2017. If you have Origin 2017 and later, please see instruction [here](#).

## 11.2.1 License Activation for Single User Node-Locked

### 11.2.1.1 Important Notes!

- To complete the node locked license process, you must be logged into the computer with an account with administrator permissions.
- If the operating system is Windows 10, 8.1, 8, 7 or Vista, you must right-click on the Origin program icon and select Run As Administrator.
- Once the license process is completed, the license is saved on this computer and thus no further internet access is required.

### 11.2.1.2 If your computer has internet access

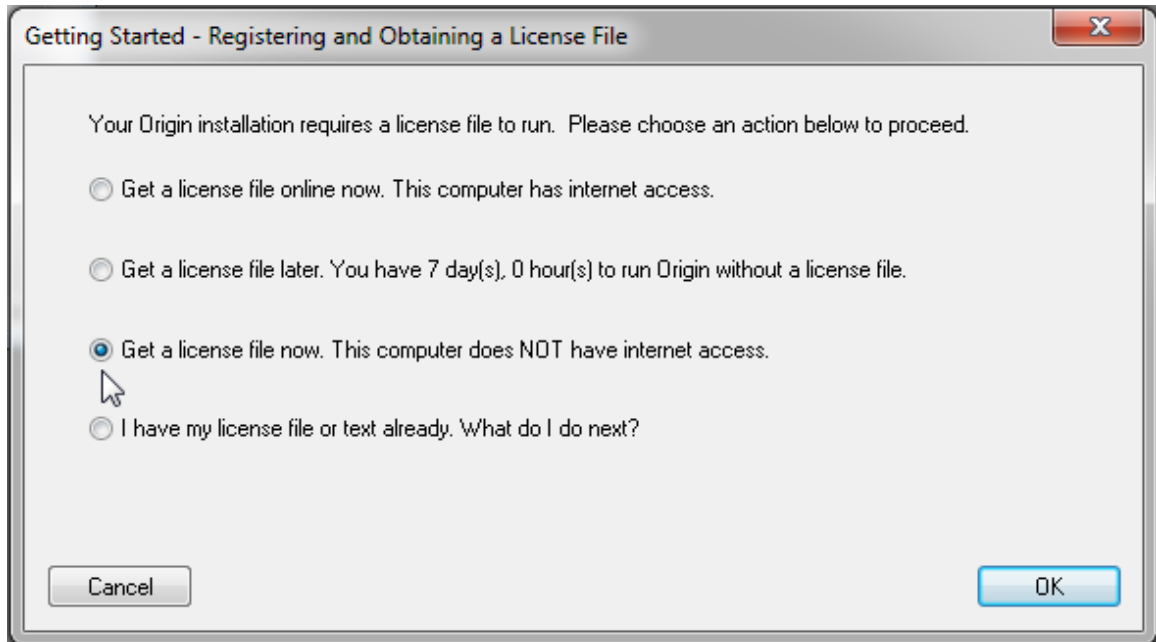
1. Start Origin. A licensing dialog opens providing options to obtain your license.
2. Select the first option, **Get a license file online now. This computer has internet access.** Then click **OK.**
3. A **Computer Information** dialog opens showing your computer details that will be passed to the OriginLab website. Click **OK.**
4. Your web browser will open to a log in page on the OriginLab website. Log in if you have an account or create an account as needed.
5. After logging in, you will be asked to choose between an "office" or "notebook" license. Note that "notebook" licenses will expire when your maintenance expires. Click **Next.**
6. Your license will be generated and displayed on the web page. Copy all the license text in the text box.
7. Now go back to Origin and paste the license text into the **Enter License** dialog and click **OK.**

### 11.2.1.3 If your computer does NOT have internet access

If your computer does not have internet access, you MUST HAVE ACCESS to another computer which DOES HAVE INTERNET ACCESS. You can obtain a license using the computer with internet access. To do this, you

will need the Origin Computer ID, Authorization Code and Origin serial number from the computer without internet access.

1. Start Origin. A licensing dialog opens providing options to obtain your license.
2. Select the third option, **Get a license file now. This computer does NOT have internet access.** and click **OK**.



3. The dialog that opens displays your Origin serial number, Computer Name, Computer ID and Authorization Code. Click **Dump to Notepad** to save these as a text file or make note of these to obtain the license.

Computer Information

Your Origin serial number is:

Your Computer name is:

Your Origin Computer ID is:

Your Authorization Code is:

To request a license for this computer, save the information above and use a computer with internet access to visit [www.originlab.com/license](http://www.originlab.com/license).

4. Go to a computer with internet access. Open a web browser to **www.originlab.com**.
5. Click the **SERVICES: License/Register Origin** link in the **Support** menu. Log in if you have an account or create an account as needed.
6. If this is the first time you are registering or licensing Origin with your account, in the page that opens after you log in, select the option **I want to register my Origin software and obtain a license file for a computer** and click **Next**. Select/enter your serial number and version and click **Continue**.  
If you have previously registered or licensed Origin with your account, you will see your Origin Product Registration web page after log in.
  - **To obtain a license for a new serial number**, click the **Register New Serial Number** button, and then select **I want to register my Origin software and obtain a license file for a computer** option and click **Next**. Select/enter your serial number and version and click **Continue**.
  - **To obtain a license for a new version not shown in your license table, such a upgrade user who wants to license his new version**, click the **Register New Serial Number** button, and then select **I want to register my Origin software and obtain a license file for a computer** option and click **Next**. Select/enter your serial number and version and click **Continue**.

- **To obtain a license for a serial number and version already shown in your license table**, click the serial number link (for that version) in the table. In the License request history page that opens, click the **Obtain a license for a new computer** button located above the license details table.
7. Next enter the Origin Computer ID, Computer Name and Authorization Code and click **Submit**.
  8. You will be asked to choose between an "office" or "notebook" license. Note that the "notebook" license will expire when your maintenance expires.
  9. Your license will be generated and displayed on the web page. Copy all the license text in the text box.
  10. Open a text editor such as Notepad and Paste the license into Notepad. Save this text file to a flash drive or disk.
  11. Now go back to your Origin computer. If you still see the license dialog showing your computer details, click the **Back** button to get back to the main license dialog. In the main license dialog, select **I have my license file or text already. What do I do next?** and click **OK**.
  12. Copy and paste the license text into the **Enter License** dialog and click **OK**.

#### 11.2.1.4 [See Also](#)

- [Activation for Multi-User Node-Locked](#)
- [Activation for Student License](#)

#### 11.2.1.5 [FAQ](#)

- [Why can't I paste text into the license dialog?](#)
- [Do I have to deactivate my old version license before getting started with my new version?](#)
- [When I select "my computer has internet access", only the window where I am suppose to paste the license opens or a program other then my web browser opens. What is wrong?](#)
- [When I paste my license into Origin I see "The activation time has passed". Why?](#)

## 11.2.2 License Deactivation for Single User Node-Locked

After successful licensing, the product key will be marked as "used" in the portal, and cannot be used on another computer.

When you plan to transfer your licensed Origin from one computer to another, you will need to deactivate the license from the original computer and then activate license for the new computer. If the original computer is not accessible, you can fill out a **System Transfer Request** form on the OriginLab website.

### 11.2.2.1 [If Origin can still run on your computer](#)

#### 11.2.2.1.1 [If your computer has internet access](#)

1. Log into Windows with an Administrator log in account.
2. Start Origin as an administrator by RIGHT-clicking on the Origin icon and selecting "Run as Administrator"

3. Select **Help: Deactivate License**.
4. Choose **Online** in Step 1 and click **Connect Now**.
5. You will be sent to the OriginLab website. Log in and click on **Get Deactivation Code (DC)**.
6. Copy the **DC** and paste the **DC** into Step 2 in Origin.
7. Click the **Deactivate** button in Origin. This will deactivate Origin on your computer. It will also send the information to the OriginLab website and release one license for you.

#### 11.2.2.1.2 If your computer does NOT have internet access

1. Open Origin (for Windows Vista and Windows 7, RIGHT-click on the Origin icon and select "Run as Administrator")
2. Click on the **Help** menu and select **Deactivate License**.
3. Choose **Offline** in Step 1.
4. On a computer with internet access, manually go to <http://www.originlab.com/reginfo> and log in.
5. Click on the serial number that you are deactivating to see what computers you have obtained licenses for.
6. Click the corresponding **Deactivate License or Transfer License** link and then follow the steps provided to get a **Deactivation Code (DC)**.
7. Make note of the **DC** and go back to the computer without internet access. Enter the **DC** into Origin to generate a **Deactivation Confirmation Number (DCN)**.
8. Make note of the **DCN** and then go back to the Deactivate License web page from the previous step. Enter the **DCN** back into Step 3 of this page.  
When you see a success message, one license is released for re-use. If you don't enter the DCN back to the OriginLab website, a license will not be released.

#### 11.2.2.2 If your licensed Origin computer is no longer available

You must fill out a System Transfer Request form on the OriginLab website.

1. Go to <http://www.originlab.com/reginfo> and log in.
2. Click on the serial number that you are deactivating to see what computers you have obtained licenses for.
3. Click the corresponding "Deactivate License or Transfer License" link.
4. In the **Note** under Step 3, click on the **request a license transfer** link and submit the form.

#### 11.2.2.3 FAQ

- [After upgrading my Operating System Origin asks me for a license](#)
- [Do I have to deactivate my old version license before getting started with my new version?](#)

#### 11.2.3 Update Your Single User Node-Locked License after Maintenance Renewal

After your [Maintenance](#) renewal has been processed, complete the following steps to obtain an updated license.

1. Log into your computer with an account with administrator permissions.
2. Start Origin as an administrator by RIGHT-clicking the Origin icon and selecting **Run as Administrator**.
3. Select **Help>About Origin**.
4. In the **About Origin** dialog, click the **License** button.
5. In the **License Status** dialog, click the **License** button.
6. Then in the main licensing dialog, proceed to obtain a new license file as you did previously for license activation.
7. After you obtain a new license from the OriginLab website, paste the license text into the **Enter License** dialog to complete the process. Select **Help>About Origin** to confirm the updated maintenance expiration date is correct.

**Note:**

You are always recommended to upgrade your Origin to the latest version during Maintenance.

### 11.3 Multi-User Node-Locked License for V2016 and Before

You have a *Multi-User Node-Locked* license if your serial number is:

*xFxxx-9xxx-76xxxxx*, or  
*xFxxx-6xxx-76xxxxx*.

If your serial number is:

*xxxxx-2xxx-79xxxxx*, or  
*xxxxx-3xxx-79xxxxx*,

then you have a *Concurrent Network* license and the information on this page is NOT relevant to you.

A *Multi-User Node-Locked* package entitles you to install or deploy Origin on a number of computers, based on your purchased license number. Each of these computers needs to get a license from OriginLab website, and the license is computer-specified. If you want to replace the licensed Origin computer, you will need to deactivate the license before you can get a new one for the new computer.



These license instructions are for 2016 and older versions. License system is updated since version 2017. If you have Origin 2017 and later, please see instruction [here](#).

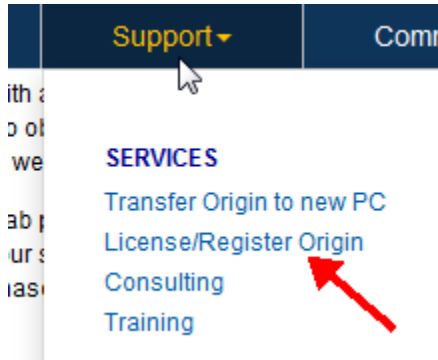
#### 11.3.1 Administrator Tips: Before you deploy Origin to your users ...

For multi-user node locked packages, OriginLab provides a mechanism to control which OriginLab web membership accounts can obtain a license for Origin installed with your serial number. This mechanism is intended to prevent unauthorized use of your serial number, ensuring that all licenses purchased by your organization are available to authorized members of your organization.

##### 11.3.1.1 How to Establish the License Access Restrictions on the OriginLab Website


As the Origin administrator, please complete the following steps to register your serial number and to establish license access restrictions for your serial number. Please complete this before notifying your users that the Origin software is available for their use.

1. Have your serial number and the associated Access Code available. These are provided on your license certificate, as well as your Origin DVD sleeve, and the inside cover of your Getting Started Booklet.
2. Go to <http://www.originlab.com/>.
3. Click the "License/Register Origin" link under the Support menu.



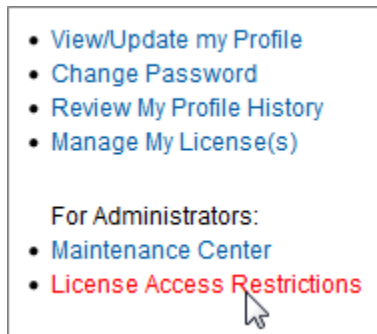
4. Log in if you have a web membership account or create an account if you do not.
5. If you have previously registered a serial number, you will see your Product Registration web page. In this case, click the **Register New Serial Number** button.
6. Select the radio button "I want to register my Origin software" and click **Next**.
7. Enter your Version and select/enter your serial number and click **Next**.
8. You will now see a page asking you to enter the Access Code and one email address or email fragment. After completing this step, you can enter additional email addresses or email fragments as needed (see Step 9 below).
  - o If you want to be the only person who can obtain licenses for your serial number, enter your full email address that is present in your log in account.
  - o If you want to allow individuals that you approve to obtain licenses for your serial number, enter your full email address that is present in your log in account. After finishing this process, you can then add additional full email addresses for your "approved" users (see the following step). You can return to the OriginLab website at any time to add these email addresses, as long as you add the user's email address before they try to obtain a license.
  - o If you want to restrict license access to any members of your organization, enter an email address fragment that is unique to your organization.



Enter Access Code:    
If you are not the Administrator, please contact them so that they c

Setup E-mail Fragment:   
Only a web site account with an E-mail address containing this E-  
Examples: @company.com or @department.company.com

9. To enter additional email addresses or email fragments after successfully entering the first one,
  1. Click your log in name located in the top right corner of the OriginLab website (or log in, if you are returning to the website and have not logged in).
  2. Then on your "welcome" web page, click the License Access Restrictions link.



3. Follow the instructions on the page that opens to add additional email addresses or fragments.

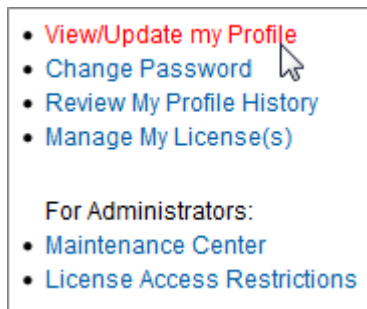
**Note:**

You are entitled to upgrade your Origin to the latest version during Maintenance. As the Origin administrator, we suggest you register the new version and set up the license access restrictions right after it is released. Once done, you can deploy it to your users whenever you think it's ready.

#### 11.3.1.2 Instructions to Provide your Origin Package to Users

When you distribute Origin to your users, in addition to providing them with the installer and the serial number, you must also provide the Access Code as it must be entered during license retrieval. Also, you must tell your users that they must log into the OriginLab website during license retrieval, or join the OriginLab website if they do not have an account. Let the users know that they should enter their organization contact information including email address when joining the OriginLab website.

If they already have an account, but it does not contain their organization email address (such as maybe they used a gmail address), tell them they must first update their account with the organization information. They must update that information by logging into the website and clicking the **View/Update my Profile Details** link.



### 11.3.1.3 Multi-user Site Deployment

There are many ways to deploy Origin to users.

- [Direct Installation](#)
- [MSI Installation](#)
- [Silent Install](#)
- [Building an Installation Package](#)
- [Installing Origin on a Remote Access Server such as Windows Terminal Server or Citrix](#)
- [Deploying Service Releases](#)
- [Sharing Custom Origin Files Including Service Releases](#)

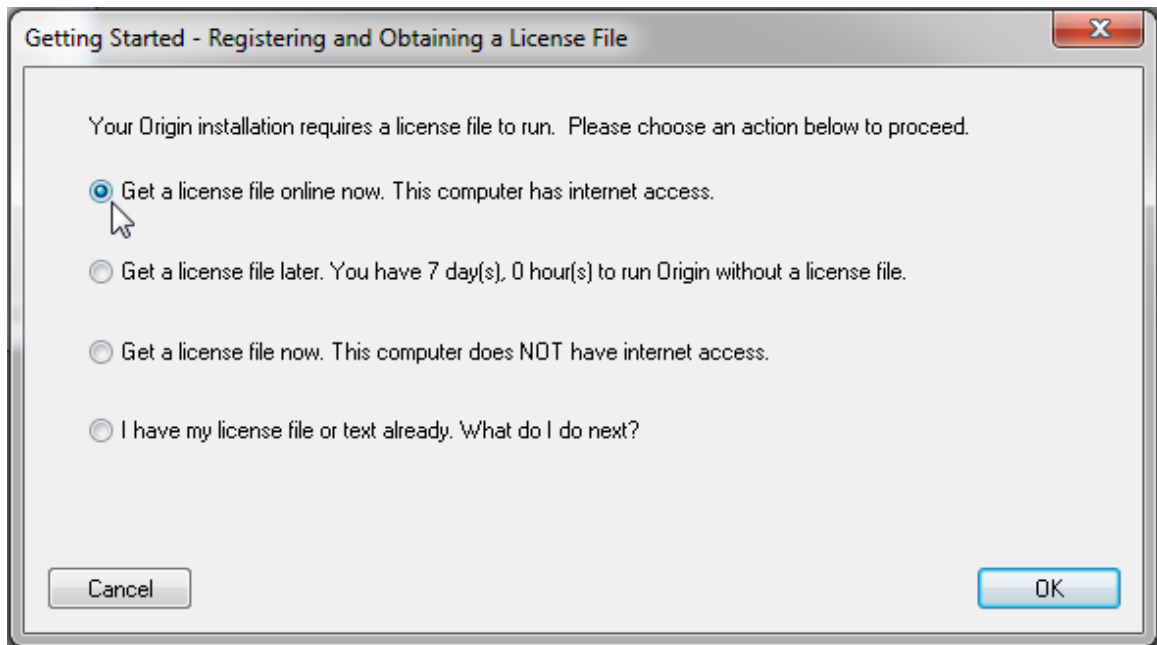
## 11.3.2 License Activation for Multi-User Node-Locked

### 11.3.2.1 Important Notes!

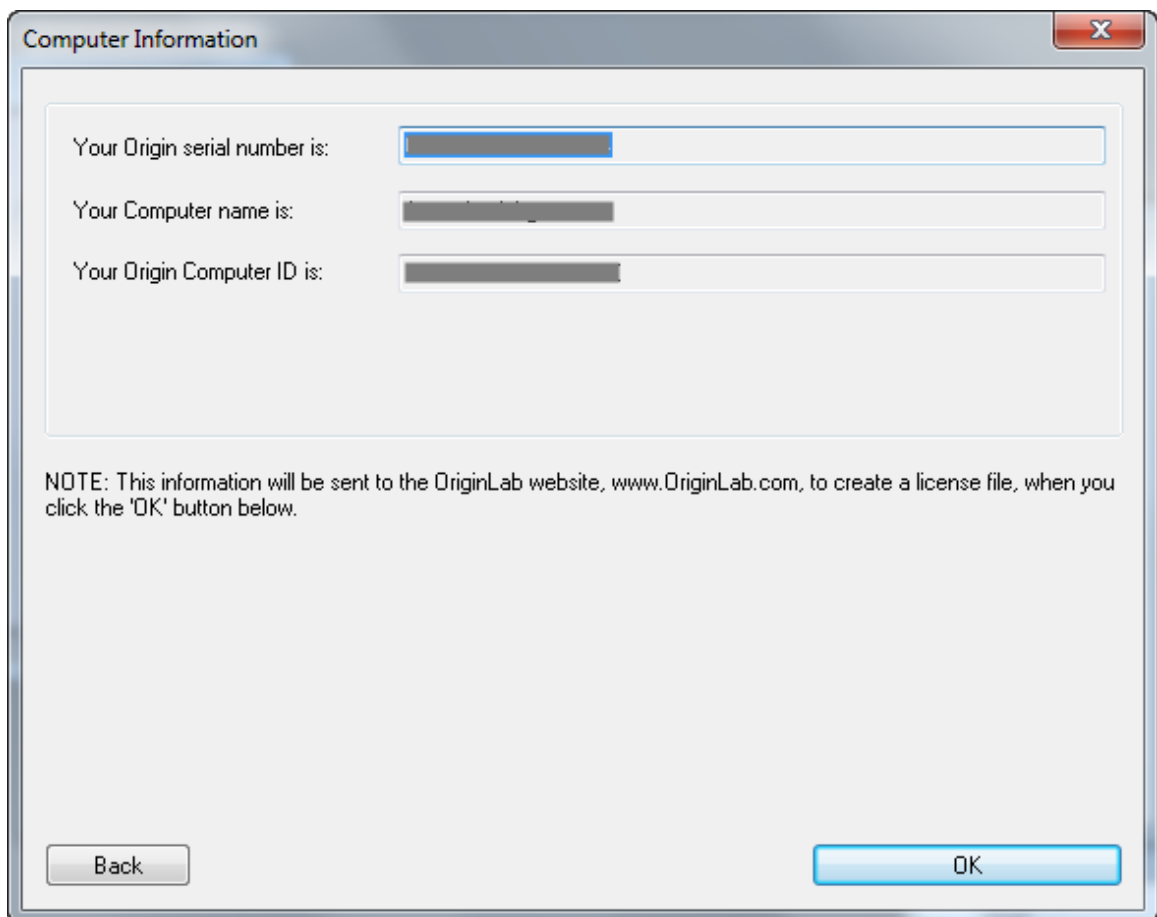
- To complete the node locked license process, you must be logged into the computer with an account with administrator permissions.
- If the operating system is Windows 10, 8.1, 8, 7 or Vista, you must right-click on the Origin program icon and select Run As Administrator.
- Once the license process is completed, the license is saved on this computer and thus no further internet access is required.

### 11.3.2.2 If your computer has internet access

1. Start Origin. A licensing dialog opens providing options to obtain your license.
2. Select the first option, **Get a license file online now. This computer has internet access.** Then click **OK**.



3. A **Computer Information** dialog opens showing your computer details that will be passed to the OriginLab website. Click **OK**.



4. Your web browser will open to a log in page on the OriginLab website. Log in if you have an account or create an account as needed.
5. After logging in, you will be asked to enter your Access Code. If you do not know your Access Code, contact your Origin administrator. Click **Next**.

Enter Access Code:  ?

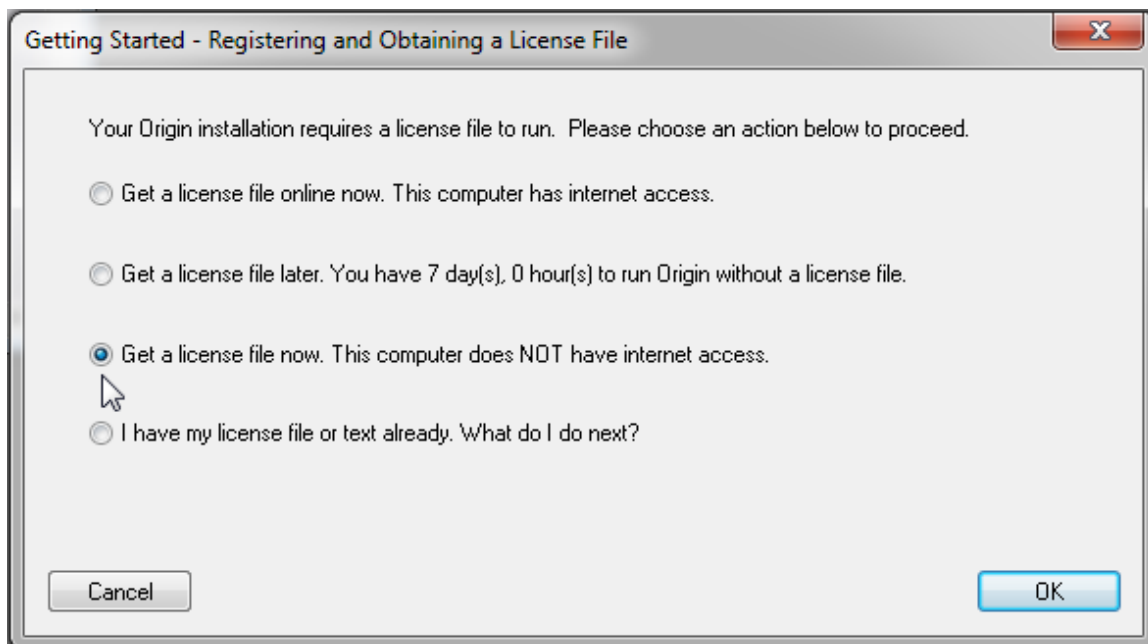
If you do not know your Access Code, please contact your Origin administrator.

6. Your license will be generated and displayed on the web page. Copy all the license text in the text box.
7. Now go back to Origin and paste the license text into the **Enter License** dialog and click **OK**.

#### 11.3.2.3 If your computer does NOT have internet access

If your computer does not have internet access, you **MUST HAVE ACCESS** to another computer, which **DOES HAVE INTERNET ACCESS**. You can obtain a license using the computer with internet access. To do this, you will need the Origin Computer ID, Authorization Code and Origin serial number from the computer without internet access.

1. In the Origin license dialog, select the option "Get a license file now. This computer does NOT have internet access." and click OK.



2. The dialog that opens displays your Origin serial number, Computer Name, Computer ID and Authorization Code. Click Dump to Notepad to save these as a text file or make note of these to obtain the license.

**Computer Information**

Your Origin serial number is:

Your Computer name is:

Your Origin Computer ID is:

Your Authorization Code is:

To request a license for this computer, save the information above and use a computer with internet access to visit [www.originlab.com/license](http://www.originlab.com/license).

3. Go to a computer with internet access and open a web browser to **www.originlab.com**.
4. Click the "License/Register Origin" link in the **Support** menu.
5. Log in if you have an account or create an account as needed.
6. **If this is the first time you are registering or licensing Origin with your log in account,**
  1. In the page that opens after you log in, select the option "I want to register my Origin software and obtain a license file for a computer" and click Next.
  2. Select/enter your serial number and version and click Continue.
  3. Next, you will be asked to enter your Access Code. If you do not know your Access Code, contact your Origin administrator.

Enter Access Code:  

If you do not know your Access Code, please contact your Origin administrator.

4. Next enter the Origin Computer ID, Computer Name and Authorization Code and click Submit.
5. Your license will be generated and displayed on the web page. Copy all the license text displayed in the text box.

6. Open a text editor such as Notepad and Paste the license into Notepad. Save this text file to a flash drive or disk.
7. Now go back to your Origin computer. You need to return to the main license dialog, so if you still see the license dialog showing your computer details, click the Back button.
8. In the main license dialog, select "I have my license file or text already. What do I do next?" and click OK.
9. Copy and paste the license text into the Enter License dialog and click OK.

**If you have previously registered or licensed Origin with your log in account:** After you log in, you will see your Origin Product Registration web page.

- To obtain a license for a new serial number not shown in your license table:
  1. Click the "Register New Serial Number" button.
  2. Then select the "I want to register my Origin software and obtain a license file for a computer" option and click Next.
  3. Select/enter your serial number and version and click Continue.
  4. Proceed to Step 3 in the previous section.
- To obtain a license for a new version not shown in your license table, such a upgrade user who wants to license his new version:
  1. Click the "Register New Serial Number" button.
  2. Then select the "I want to register my Origin software and obtain a license file for a computer" option and click Next.
  3. Select/enter your serial number and version and click Continue.
  4. Proceed to Step 3 in the previous section.
- To obtain a license for a serial number and version already shown in your license table:
  1. Click the serial number link (for that version) in the table.
  2. In the License Request History page that opens, click the "Obtain a license for a new computer button" located above the license details table.
  3. Proceed to Step 4 in the previous section.

#### 11.3.2.4 Origin administrator, obtaining license for user's computer

If you are the administrator for a multi-seat node locked package, you can allow the user's to obtain their own Origin licenses or you can handle the licensing process. If you decide to handle the licensing, you can use Origin's license dialog on the user's computer to obtain the license, or you can get the needed computer details and obtain the license from a different computer. In either case, you should follow the instructions provided above.

#### 11.3.2.5 See Also

- [Activation for Single-User Node-Locked](#)

- [Activation for Student License](#)

#### 11.3.2.6 [FAQ](#)

- [When I try to get a license, I'm asked for an Access Code. What is this and why do I see this?](#)
- [When I try to get a license, why do I see a message telling me the license has been upgraded and that licenses for previous versions are no longer available?](#)
- [When I try to get a license, I see a message telling me that I do not have access to the license. Why do I see this message and what can I do to solve it?](#)
- [Why can't I paste text into the license dialog?](#)
- [Do I have to deactivate my old version license before getting started with my new version?](#)
- [When I select "my computer has internet access", only the window where I am suppose to paste the license opens or a program other than my web browser opens. What is wrong?](#)
- [When I paste my license into Origin I see "The activation time has passed". Why?](#)

### 11.3.3 License Deactivation for Multi-User Node-Locked

When you plan to transfer your licensed Origin from one computer to another, you will need to deactivate the from the original computer and then get a new license for the new computer. If the original computer is not accessible, you can fill out a System Transfer Request form on the OriginLab website.

#### 11.3.3.1 [If Origin can still run on your computer](#)

##### 11.3.3.1.1 [If your computer has internet access](#)

1. Log into Windows with an Administrator log in account.
2. Start Origin as an administrator by RIGHT-clicking on the Origin icon and selecting "Run as Administrator"
3. Select **Help: Deactivate License**.
4. Choose **Online** in Step 1 and click **Connect Now**.
5. You will be sent to the OriginLab website. Log in and click on **Get Deactivation Code (DC)**.
6. Copy the **DC** and paste the **DC** into Step 2 in Origin.
7. Click the **Deactivate** button in Origin. This will deactivate Origin on your computer. It will also send the information to the OriginLab website and release one license for you.

##### 11.3.3.1.2 [If your computer does NOT have internet access](#)

1. Open Origin (for Windows Vista and Windows 7, RIGHT-click on the Origin icon and select "Run as Administrator")
2. Click on the **Help** menu and select **Deactivate License**.
3. Choose **Offline** in Step 1.

4. On a computer with internet access, manually go to <http://www.originlab.com/reginfo> and log in.
5. Click on the serial number that you are deactivating to see what computers you have obtained licenses for.
6. Click the corresponding **Deactivate License or Transfer License** link and then follow the steps provided to get a **Deactivation Code (DC)**.
7. Make note of the **DC** and go back to the computer without internet access. Enter the **DC** into Origin to generate a **Deactivation Confirmation Number (DCN)**.
8. Make note of the **DCN** and then go back to the Deactivate License web page from the previous step. Enter the **DCN** back into Step 3 of this page.  
When you see a success message, one license is released for re-use. If you don't enter the DCN back to the OriginLab website, a license will not be released.

#### 11.3.3.2 If your licensed Origin computer is no longer available

You must fill out a System Transfer Request form on the OriginLab website.

1. Go to <http://www.originlab.com/reginfo> and log in.
2. Click on the serial number that you are deactivating to see what computers you have obtained licenses for.
3. Click the corresponding "Deactivate License or Transfer License" link.
4. In the **Note** under Step 3, click on the **request a license transfer** link and submit the form.

#### 11.3.3.3 FAQ

- [After upgrading my Operating System Origin asks me for a license](#)
- [Do I have to deactivate my old version license before getting started with my new version?](#)

#### 11.3.4 **Update your Multi-User Node-Locked License after Maintenance Renewal**

After your [Maintenance](#) renewal has been processed, complete the following steps to obtain an updated license.

1. Log into your computer with an account with administrator permissions.
2. Start Origin as an administrator by RIGHT-clicking the Origin icon and selecting **Run as Administrator**.
3. Select **Help:About Origin**.
4. In the **About Origin** dialog, click the **License** button.
5. In the **License Status** dialog, click the **License** button.
6. Then in the main licensing dialog, proceed to obtain a new license file as you did previously for license activation.
7. After you obtain a new license from the OriginLab website, paste the license text into the **Enter License** dialog to complete the process. Select **Help:About Origin** to confirm the updated maintenance expiration date is correct.



**Note:**

We always recommended that you upgrade your Origin to the latest version during Maintenance. If you are the administrator of a multi-user Origin package, we suggest you register the new version upon release and deploy it to users when you are ready.

## 11.4 Student License for V2016 and Before

### 11.4.1 Important Notes!

- The Student License allows you to install OriginPro on ONE personal computer.
- If you purchased a 1-yr Student License from the OriginLab Online Store, you are eligible for a software upgrade if a new product is released before your 1-yr license expires. Six-month Student Licenses purchased from OnTheHub are NOT upgradeable.
- If you choose to upgrade your student version, you must install and license the new version on the computer with the old version installed. If you wish to move your license to a new computer before upgrading, you must deactivate the license on the old computer before installing the upgrade to the new computer (see [License Deactivation](#), below).

### 11.4.2 License Activation

For more information on the benefits and restrictions of the student version see [this](#) page.

#### 11.4.2.1 If your computer has internet access



[Watch the video tutorial - Licensing Origin on a Computer with Internet Access](#)

1. Start Origin. A licensing dialog opens providing options to obtain your license.
2. Select the first option, **Get a license file online now. This computer has internet access.** Then click **OK.**
3. A **Computer Information** dialog opens showing your computer details that will be passed to the OriginLab website. Click **OK.**
4. Your web browser will open to a log in page on the OriginLab website. Log in if you have an account or create an account as needed.
5. After logging in, your license will be generated and displayed on the web page. Copy all the license text in the text box.
6. Now go back to Origin and paste the license text into the **Enter License** dialog and click **OK.**

#### 11.4.2.2 If your computer does NOT have internet access

 [Watch the video tutorial - Licensing Origin on a Computer that does not have Internet Access](#)

If your computer does not have internet access, you can obtain a license using another computer that has internet access. To do this, you will need the Origin Computer ID, Authorization Code and Origin serial number from the computer without internet access.

1. In the Origin license dialog, select the option "Get a license file now. This computer does NOT have internet access." and click OK.
2. The dialog that opens displays your Origin serial number, computer name, Computer ID and Authorization Code. Click Dump to Notepad to save these as a text file or make note of these to obtain the license.
3. Go to a computer with internet access and open a web browser to [www.originlab.com](http://www.originlab.com).
4. Click the "License/Register Origin" link in the Support menu.
5. Log in if you have an account or create an account as needed.
6. **If this is the first time you are registering or licensing Origin with your log in account,**
  1. In the page that opens after you log in, select the option "I want to register my Origin software and obtain a license file for a computer" and click **Next**.
  2. Select/enter your serial number and version and click **Continue**.
  3. Next enter the Origin Computer ID, computer name and Authorization Code and click **Submit**.
  4. Your license will be generated and displayed on the web page. Copy all the license text displayed in the text box.
  5. Open a text editor such as Notepad and Paste the license into Notepad. Save this text file to a flash drive or disk.
  6. Now go back to your Origin computer. You need to return to the main license dialog, so if you still see the license dialog showing your computer details, click the Back button.
  7. In the main license dialog, select "I have my license file or text already. What do I do next?" and click **OK**.
  8. Copy and paste the license text into the Enter License dialog and click **OK**.

**If you have previously registered or licensed Origin with your log in account:** After you log in, you will see your Origin Product Registration web page.

To obtain a license for a new serial number or version not shown in your license table:

9. Click the **Register New Serial Number** button.
10. Then select the "I want to register my Origin software and obtain a license file for a computer" option and click **Next**.
11. Select/enter your serial number and version and click **Continue**.
12. Proceed to Step 3 in the previous section.

11.4.2.3 [See Also](#)

- [Activation for Single-User Node-Locked](#)
- [Activation for Multi-User Node-Locked](#)

#### 11.4.2.4 FAQ

- [Why can't I paste text into the license dialog?](#)
- [When I select "my computer has internet access", only the window where I am suppose to paste the license opens or a program other then my web browser opens. What is wrong?](#)
- [When I paste my license into Origin I see "The activation time has passed". Why?](#)

### 11.4.3 License Deactivation

When you plan to transfer your licensed Origin from one computer to another, you will need to deactivate the from the original computer and then get a new license for the new computer. If the original computer is not accessible, you can fill out a System Transfer Request form on the OriginLab website.

#### 11.4.3.1 If Origin can still run on your computer



[Watch the video tutorial - Deactivating a Node Locked License](#)

##### 11.4.3.1.1 If your computer has internet access

1. Log into Windows with an Administrator log in account.
2. Start Origin as an administrator by RIGHT-clicking on the Origin icon and selecting "Run as Administrator"
3. Select **Help: Deactivate License**.
4. Choose **Online** in Step 1 and click **Connect Now**.
5. You will be sent to the OriginLab website. Log in and click on **Get Deactivation Code (DC)**.
6. Copy the **DC** and paste the **DC** into Step 2 in Origin.
7. Click the **Deactivate** button in Origin. This will deactivate Origin on your computer. It will also send the information to the OriginLab website and release one license for you.

##### 11.4.3.1.2 If your computer does NOT have internet access

1. Open Origin (for Windows Vista and Windows 7, RIGHT-click on the Origin icon and select "Run as Administrator")
2. Click on the **Help** menu and select **Deactivate License**.
3. Choose **Offline** in Step 1.
4. On a computer with internet access, manually go to <http://www.originlab.com/reginfo> and log in.
5. Click on the serial number that you are deactivating to see what computers you have obtained licenses for.

6. Click the corresponding **Deactivate License or Transfer License** link and then follow the steps provided to get a **Deactivation Code (DC)**.
7. Make note of the **DC** and go back to the computer without internet access. Enter the **DC** into Origin to generate a **Deactivation Confirmation Number (DCN)**.
8. Make note of the **DCN** and then go back to the Deactivate License web page from the previous step. Enter the **DCN** back into Step 3 of this page.  
When you see a success message, one license is released for re-use. If you don't enter the DCN back to the OriginLab website, a license will not be released.

#### 11.4.3.2 If your licensed Origin computer is no longer available

You must fill out a System Transfer Request form on the OriginLab website.

1. Go to [www.originlab.com/reginfo](http://www.originlab.com/reginfo) and log in.
2. Click on your serial number that you are deactivating and then on "Deactivate License or Transfer License".
3. In the **Note** under Step 3, click on the **request a license transfer** link and submit the form.

#### 11.4.3.3 FAQ

- [After upgrading my Operating System Origin asks me for a license](#)
- [Do I have to deactivate my old version license before getting started with my new version?](#)

## 12 Internet License

Similar to [Concurrent License](#), the Internet License allows you to install Origin on any number of computers in your organization, and simultaneously run Origin on as many computers as the number of seats purchased.

The key difference is that with Internet License, you do not need to maintain a license server in your organization.

If you purchase  $n$  seats, you will be provided with  $n$  Product Keys. You can install and activate Origin on any PC using these product keys, thus allowing you to run Origin simultaneously on  $n$  PCs. The license will get automatically deactivated from the previous PC where the product key is used.

This license requires that your PCs are all connected to the internet. There is however an option to lock a Product Key to a particular PC for a period of 7 days at a time. This allows you the flexibility of having uninterrupted use of the license such as when traveling outside of your organization.

### 12.1 VERY IMPORTANT NOTES!!!

This license type requires computer **ALWAYS CONNECT TO THE INTERNET**. Make sure your network has a stable internet connection with low traffic.

### 12.2 Register Serial Number and Get Product Key

**If you have a single-user package with serial number:**

*xFxxx-6xxx-70/71/72xxxxx*

Please follow instruction on [this page](#) to register your serial number and generate product key(s).

**If you are the Administrator of a multi-user package with serial number::**

*xFxxx-6xxx-76xxxxx*

Please follow instruction on [this page](#) to register your serial number and set up the product key deployment mechanism BEFORE you deploy Origin to your users.

### 12.3 License Activation

1. Start Origin. A [License Activation dialog](#) opens.
2. With **Enter Product Key below and click Activate** selected, enter your product key and click **Activate**.
3. The license process will then be done in background. If successful, you will get a success message.

**If the background licensing process fails, please continue with the following steps:**

4. If the licensing process fails for some reason, a Notepad window opens with a link in it.
5. Copy this link to a web browser that has an internet connection. The link will bring you to the OriginLab website.
6. When you log into your account, the license text will be generated and displayed on the web page.
7. Copy the license text and paste it back to Origin's **License Activation** dialog. Click **OK**.

### 12.4 License Deactivation

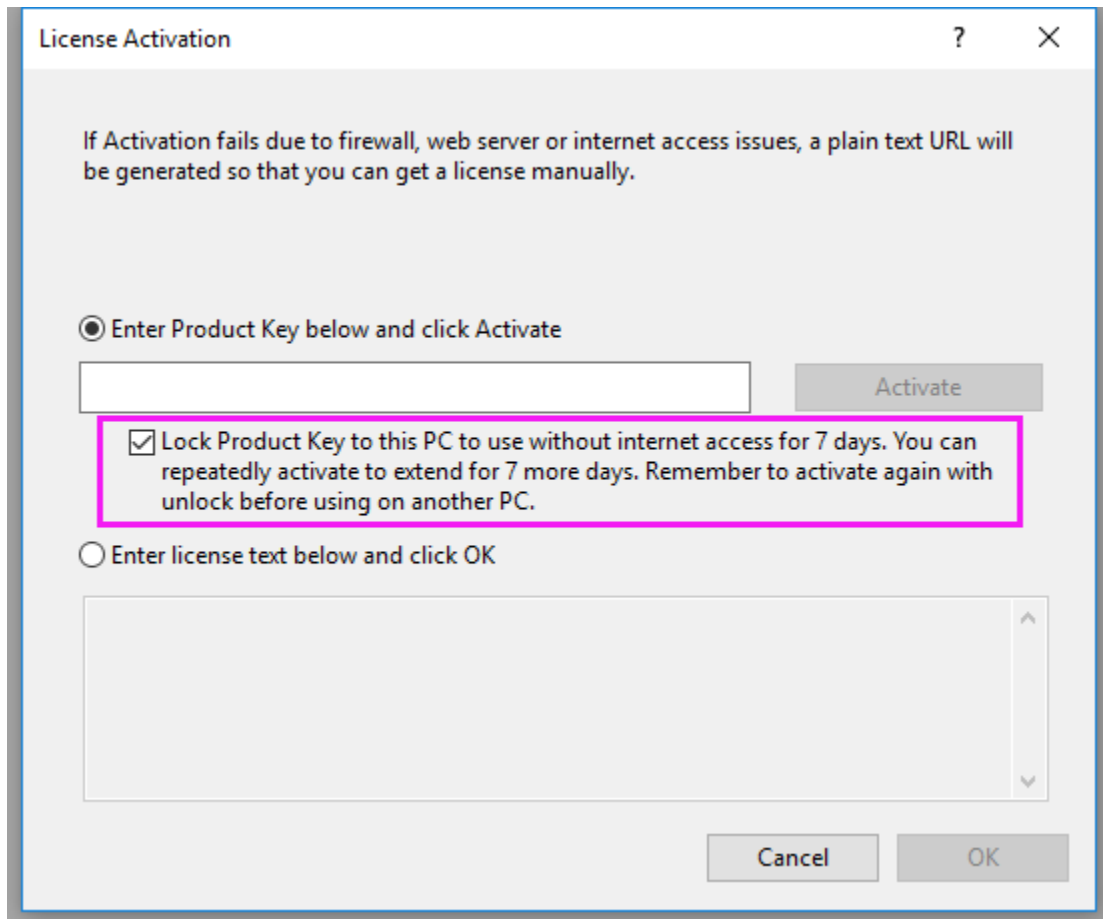
There is NO NEED to deactivate license. Once the product key is activated on another computer, Origin activated with the same key on the original computer will deactivate itself.

## 12.5 Disconnect Origin from Internet

You can lock license to a special computer for a limited time up to one week. During this period, computer can be disconnected from internet and Origin still runs successfully.

**Note:** You must lock the license BEFORE disconnecting your computer from internet.

1. Open Origin. Select Help: About Origin.
2. Click on License button.
3. Enter product key if it has not been auto-filled.
4. Select Lock Product Key to this PC to use without internet access for up to one week checkbox.



5. Click **Activate** button.
6. Disconnect the computer from the network.